



Waverley Borough Council Biodiversity Policy and Action Plan 2022 - 2032

Date of Adoption – 01/11/22

Published – 05/01/23

Date of last review - NA

Date of next review – 01/11/27

Lead officer – Head Ranger – Parks and Countryside

Document Information & Governance

Approval & Publication

Approving Body	Approval route requirement	Publication Type	Publication requirement	Review frequency	Document owner	Next Review Date
<i>Executive Committee</i>	<i>Overview & Scrutiny Committee Policy</i>	<i>Internal and external</i>	<i>There are no legal or constitutional requirements for publication</i>	<i>Annual</i>	<i>David Olliver</i>	<i>01/11/27</i>

Version Control Information

Version	Version Status (Draft, Approved /Published Internally Externally)	Date	Version Comment	Version Author
V1.0	Published	05/01/2023	Approved and published version	David Olliver

Impact Assessments and Consideration

Impact Assessment Type	Required / Not Required	Date Completed	Impact Assessments and Considerations Comment	Assessment Owner
Equality Impact Assessment	Screening completed	11/10/22	Full assessment not required	Faye Pringle
Health Policies	Not required	N/A	N/A	N/A
Data Protection Impact Assessment	Not required	N/A	N/A	N/A

Table of Contents

1	Foreword	6
2	Policy Coverage and Structure.....	7
2.1	Policy Coverage	7
2.2	Policy Structure	7
3	Policy Vision and Aims	8
3.1	Vision	8
3.2	Aims.....	8
4	Summary of Policy Statements Supporting the Biodiversity Policy	9
5	Waverley Borough Climate Change and Sustainability Strategy	11
5.1	Council Declaration	11
5.2	Corporate Strategy	11
6	What is Biodiversity and why it matters?.....	12
6.1	Biodiversity Defined.....	12
6.2	Why we should conserve and enhance it.....	12
7	Council's focus on Biodiversity	13
7.1	Council Commitment to Biodiversity	13
7.2	Achievements	13
7.3	Enforcement and influencing	14
8	Policy Background	15
8.1	International Context	15
8.2	County context	15
8.3	Borough context	15
9	The Council's Greenspaces and Biodiversity resource	19
9.1	The Council's Land Holding	19
9.2	Biodiversity Opportunity Areas (BOAs)	19
9.3	Waverley Borough Habitats	25
10	Ecological Threats and Challenges	30
11	Habitat management.....	32
11.1	Habitat Designation	32
11.2	Management Plans	32
11.3	Status of site management plans with the Council	33
12	Biodiversity Funding.....	35
12.1	Existing Funding Sources.....	35
12.2	Other funding sources	35
12.3	Biodiversity Net Gain.....	36
12.4	Biodiversity net gain income	38
13	Planning	40
13.1	Planning Policy.....	40
13.2	Consultation	40

14	Education	42
14.1	Securing successful delivery of policy.....	42
14.2	Methods of achieving education	42
14.3	Benefits for the Council with Volunteer work	43
14.4	Health and well being	45
15	Communication.....	46
16	Collaborative and Partnership Working	47
16.1	Successful policy delivery.....	47
16.2	Collaborative working within the Council	47
16.3	Developing partnerships priorities and initiatives.....	47
16.4	Stakeholder Consultation	48
17	Monitoring.....	49
17.1	Management plan monitoring	49
17.2	Biodiversity Net Gain monitoring.....	49
17.3	Protected Site Assessments.....	49
17.4	SNCI reporting	50
18	Third Parties	52
18.1	Devolution	52
18.2	Council land managed by other parties.....	52
18.3	Land owned by other landholders	52
19	Policy Review and Delivery	53
19.1	Review timeframe.....	53
19.2	Policy delivery	53
19.3	Reporting	53
20	Glossary	54
21	Acronyms	55
22	References	56

Figures

Figure 1: Waverley Borough Council Biodiversity Strategy: Statutory and Non-statutory Designated Sites for Nature Conservation – Summary Overview.....	22
Figure 2: Waverley Borough Council Biodiversity Strategy: Statutory and Non-statutory Designated Sites for Nature Conservation – East	23
Figure 3: Waverley Borough Council Biodiversity Strategy: Statutory and Non-statutory Designated Sites for Nature Conservation – West	24
Figure 4: Summary of volunteer hours between FY 2008/2009 and 2021/2022	44

Tables

Table 1: Policy Statements	9
Table 2: Local policies linked to Biodiversity within the Borough.....	17

Table 3: Biodiversity Opportunity Areas within Waverley Borough Council	20
Table 4: Ecological threats and challenges and proposed mitigation measures	31

Appendices

Appendix 1: Legislative Context	59
Appendix 2: Background information on sites managed by Waverley Borough Council.....	64
Appendix 3: Waverley Borough Council Partnerships.....	75
Appendix 4: Outline provisional budget forecasts	76
Appendix 5: SSSI Condition categories.....	77
Appendix 6: Proposed action plan and timescales.....	78

1 Foreword

We are extremely proud to introduce Waverley Borough Council's first Biodiversity Policy, setting out our plans for the next 10 years. We know how important the borough's green spaces are to its residents of all ages, many of whom have discovered them for the very first time during the pandemic.

We are extremely fortunate as a council to have some exceptional areas under our stewardship, including sites of special scientific interest, local nature reserves and sites of nature conservation importance, amongst others, which are some of the country's best wildlife and geological sites and include some of the most spectacular and beautiful habitats.

However, human impacts are driving significant changes to our local wildlife and habitats, these include intensification of farming, increases in urbanisation and changes in global temperatures. The interrelationship between climate change and biodiversity is extensive, and protecting and improving the abundance, distribution, and ecology of the UK's wildlife is critical to our future. This is an area we know that many residents care deeply about and expect the council to lead on.

In 2019 the council declared a climate emergency and has been working hard to meet its aim to become carbon-neutral by 2030. Our adopted Carbon Neutrality Action Plan included the development and implementation of this Biodiversity Policy and Action Plan to improve the natural environment across areas that we manage, and to encourage other organisations and residents across the borough to do the same.

This policy sets a clear vision in how we as a council will manage our green spaces, create site specific management plans and engage with residents, voluntary groups and organisations across the borough to improve the natural environment of Waverley through enriching our biodiversity, increasing habitat connectivity across the landscape, and providing a central biodiversity community hub to promote, encourage and enhance engagement across the borough.

Cllrs Liz Townsend, portfolio holder for Planning and Economic Development, Steve Williams, portfolio holder for the Environment and Kika Mirylees, portfolio holder for Health, Wellbeing, Parks and Leisure.

2 Policy Coverage and Structure

2.1 Policy Coverage

This policy is intended to cover the activities of the council on its own land holding with the intention to ensure that the council works consistently towards delivering biodiversity improvements on areas it is responsible for. The land holding of the council covers areas such as; parks & recreational grounds, countryside, woodlands, cemeteries & churchyards, green spaces, housing estates & senior living areas, car parks, land around council properties and leased out land.

This policy is not planning policy as it only covers the management of council land assets. Policies relating to Biodiversity and planning can be found in the Local Plan (Part 1 and Part 2) and presently there is a Climate and Sustainability Supplementary Planning Document (SPD) that is being prepared by the council's Planning Policy team, which will detail how the council will consider climate change when assessing planning applications.

2.2 Policy Structure

The policy is set out in different sections as outlined in the table of contents bringing together the varying elements required to create a Biodiversity Policy.

In section 3 the council's Vision and Aims in relation to enriching local biodiversity, increasing habitat connectivity across the borough's landscape and promoting and enhancing community engagement are set out. Section 4 summaries the various policy statements in Table 1, summarising the individual sections of the policy so that they are easy to access.

There are several important appendices attached to the policy, including Appendix 2 listing all the council's major green space holdings in the borough, summarising the various site designations and their locations; Appendix 4 outlines current budgets and forecasts. Appendix 6, details the important action plan, setting out how the council will take action to improve, enhance and increase local biodiversity across the borough.

3 Policy Vision and Aims

3.1 Vision

In managing its green spaces, the council's vision is to improve Waverley's natural environment by enriching the borough's biodiversity, increasing habitat connectivity across the landscape, and providing a central biodiversity community hub to promote, encourage and enhance community engagement and linkages across the borough.

3.2 Aims

The Biodiversity Policy aims to:

- Ensure open spaces are managed to maximise biodiversity and provide access to diverse open spaces to residents
- Ensure the council operates within the law and adheres to best practice
- Raise awareness of the benefits and value of good quality, accessible, biodiversity rich open spaces
- Identify priorities for future investment and ensures the best use of available resources
- Plan for and mitigate the effects of climate change
- Support the delivery of local initiatives
- Develop and deliver a robust monitoring strategy
- Develop a coherent and co-ordinated plan for nature recovery, restoration and protection across Waverley that integrates with the relevant Local Nature Recovery Strategy as required by the Environment Act 2021.
- Provide a framework for biodiversity net gain initiatives based on planning approvals across Waverley.

4 Summary of Policy Statements Supporting the Biodiversity Policy

The Biodiversity Policy statements are presented in Table 1 as an easy reference summary.

Table 1: Policy Statements

Topic	Statement number	Statement
Habitat Management	1	The council will prioritise management and habitat creation to maximise biodiversity and connectivity across the landscape.
	2	The council will ensure there is a current habitat management plan or statement for all sites or habitat types it manages and that these fully consider habitat connectivity.
Biodiversity Funding	3	The council will ensure the efficient use of existing resources and identify future opportunities for capital delivery by S106, Community Infrastructure Levy (CIL), or other external funding wherever possible to maintain and improve green space infrastructure.
	4	Where the council identifies suitable opportunities to accept biodiversity net gain offset funding on its own land, or where it is directly delivering projects, we will aim to deliver 20% biodiversity net gain for those developments wherever possible.
Planning	5	The council will ensure Development Management consults the Greenspaces Team for planning applications that create new green spaces, have a landscaping strategy, impact common land and/or impacts a SSSI, NR, SNCI, have implications for the LNRS and/or are seeking BNG offsite opportunities.
	6	The council will identify training needs and deliver a training programme for the organisation and its contractors to ensure Biodiversity Policy principles are embedded throughout the organisation.
Education	7	The council will assist with the signposting of best practice guidance, in partnership with key stakeholders in managing habitat and biodiversity; and ensure its own operations are undertaken following best practice.

Topic	Statement number	Statement
Communication	8	The council will work in partnership with primary care givers and community support teams to deliver green social prescribing measures within its green spaces.
	9	The council will develop a communication strategy in relation to biodiversity initiatives and maintenance works, specifically identifying the objective of the initiative, method of delivery and outcomes.
Partnerships	10	The council will cultivate positive partnerships across the borough and identify key projects it can support, sharing resources, where possible and proactively engaging with the local community and local authorities.
	11	The council will extend data sharing agreements with external organisations to increase efficiency and accuracy of data used for management and monitoring.
Monitoring	12	The council will develop a costed monitoring regime across all sites or habitats it manages to support and guide their management.
	13	The council will review this policy every five years, or as required, and will report to councillors and the community on the delivery of this Biodiversity Policy and Action Plan.
Third Parties	14	The council will ensure that third parties maintaining council-owned land, comply with the Biodiversity Policy. When maintaining land on behalf of a third party, the principles of this policy will be delivered wherever possible.

5 Waverley Borough Climate Change and Sustainability Strategy

5.1 Council Declaration

On the 18 September 2019, Waverley Borough Council unanimously declared a climate emergency and committed itself to being carbon neutral by 2030 to help reduce the risk of temperatures rising more than 1.5°C. Whilst climate change needs to be tackled at national or international level, all levels of government, communities, businesses, and individuals have a role to play in addressing climate change.

The council has a key role to play in mitigating the effects of climate change. The council will focus on doing all it can to lessen climate change by reducing its emissions on council owned sites and in the services provided. The council will ensure its services are resilient and adaptable enough to respond to the impacts of climate change and will provide community leadership so that residents and businesses are able to get involved in preventing climate change rather than simply preparing for it.

5.2 Corporate Strategy

To reinforce the council's commitment to climate change and sustainability the council has a recently adopted corporate strategy outlining the council's vision, the council is committed to promoting and sustaining a sense of responsibility by all for our environment, promoting biodiversity, championing the green economy, and protecting our planet.

The aim is to become a net zero-carbon council by 2030, encouraging carbon reduction and the promotion of biodiversity and sustainable homes, businesses, and transport across the borough. The council will achieve this by working with partners to ensure the environmental stewardship of our open spaces are of the highest quality including the promotion of biodiversity, rewilding, and phasing out pesticide use other than in exceptional and defined circumstances.

To be a sustainable council, it is important that the council does all it can do within its power to safeguard our environment for present and future generations and play our part in promoting biodiversity as well as making our contribution to preventing the extremely profound consequences of severe climate change through carbon reduction strategies.

6 What is Biodiversity and why it matters?

6.1 Biodiversity Defined

No one definition of biodiversity exists, however all definitions point to the variety of life, from the building blocks of life, genes, to individual species and ecosystems. Through thousands of millennia, these have evolved to make life possible on planet Earth. Biodiversity gives us the air we breathe, water we drink and food we eat. Without biodiversity, we have no life.

6.2 Why we should conserve and enhance it

Every species on this planet has evolved to do a specific task. The loss of one of these species destabilises the fine balance that has taken millennia to establish. Whilst technology can help cushion some of these changes, it cannot replace the valuable role that biodiversity brings to our everyday life.

The planet is hugely diverse and whilst we've only recorded approximately 1.5 million species, it is likely that there are several million more (Sweetlove, 2011). We often concentrate attention on the conservation of popular species of mammals and birds, however 95% of known animal species are invertebrates and lack a backbone (Centre for Biological Diversity, Accessed in 2021), such as insects, spiders and worms and they too are declining alarmingly, without yet making the headlines. Whilst these creatures maybe unattractive or repellent to some people, they are vital components of the ecosystem. Declines in invertebrate species will have catastrophic impacts on the planet. Not only do they pollinate plants and ensure our crops grow and fruit, but they have a very important role in decomposing dead matter, fertilising the soil, and feeding species higher up the food chain.

Whilst much focus is placed on animals, equally important to a healthy fully functioning ecosystem is the role played by plants, fungi and microbes. Without these organisms unpinning the ecosystem, other life simply would not be able to exist.

Collectively all life on earth is interdependent and in a state of dynamic balance. This balance is sadly being damaged and disrupted, in some cases drastically by the influence of humans.

Biodiversity and climate change are inextricably linked. Tackling climate change will help tackle the loss in biodiversity and vice versa. Biodiversity declines in the U.K is also linked to the extensive loss and degradation of habitats. The U.K has half of its original biodiversity left, meaning it is the least diverse in the G7 countries and is within the bottom 10% of all countries globally (Davis, 2020).

7 Council's focus on Biodiversity

7.1 Council Commitment to Biodiversity

As a custodian of several statutory and non-statutory designated sites (e.g. SSSIs, SNCIs etc) across the borough the council has been able to ensure a steady and continuous commitment to the understanding, protection, and enhancement of the borough's natural environment.

The council operates a highly skilled Parks & Countryside team consisting of Countryside Rangers, Tree Officers and Greenspaces Officers who work alongside 300 community volunteers, work placement students and PhD students undertaking project and maintenance work across the sites that the council is responsible for.

The council also works with community volunteers to undertake a range of wildlife surveys and monitoring as well as working with professional wildlife recorders to ensure we build up and maintain species records for our sites.

Officers have close working partnerships, sharing best practice with organisations and groups committed to the environment including the National Trust, Environment Agency, Natural England, Surrey Wildlife Trust, Forestry Commission, Surrey Amphibian Reptile Group, Amphibian Reptile Conservation, Surrey County Council, Butterfly Conservation and Open Spaces Society as well as local and national community groups to adopt a joined-up approach to sites management and ensure the council remains a up to date and continuing to maintain best practise on our sites.

In addition, the council also manages a grounds maintenance contract which includes conservation grass cutting and has managed schemes such as Plantlife's No Mow May Campaign, whilst also introducing a Pesticides Policy requiring the phasing out of pesticide usage. The appointed contractor works closely with officers to understand and implement environmental enhancements. The Countryside Ranger team also use other appointed specialist contractors and organisations to help deliver the required site objectives and maximise biodiversity opportunities.

7.2 Achievements

The council has successfully delivered environmental improvements under several Environmental Stewardship Agreements for the last 12 years and continues to work in partnership with Natural England to ensure we continue to do so.

Significant achievements include sites receiving the highest environment assessment by Natural England of being in favourable condition, bringing key sites under long term management plans and woodland management plans, undertaking extensive National Vegetation Classification (NVC) assessment, implementing grazing regimes at Farnham Park and Lammas Lands, Godalming. Desilting, and maintaining the series

of ponds across the borough and developing long term management of ditches and watercourses. The council has achieved 10 Green Flag Awards for its green spaces, eight of which are managed specifically for conservation and ecological purposes.

Appendix 2 highlights sites, designations, funding streams, and management of environmental areas. The council continues to develop and strive for excellence with Natural England identifying sites as improving and in favourable condition and survey, monitoring and community activity ensuring current and frequent targeted management.

7.3 Enforcement and influencing

The council is committed to protecting the natural environment against inappropriate development. The council aims to provide considered scrutiny to residential encroachments such as driveway creation and will enforce where there has been boundary encroachment and green waste dumping by residents wherever possible as well as preventing planting with unauthorised/inappropriate trees or plants on sites directly under the council's control.

The council also influences and directs utility and service providers wherever possible to ensure that the methods used for their operations have the least impact on the environment, such as no dig zones, tree protection areas and outlining limits to avoid environmental damage.

The council is committed to enforcing site by-laws, preventing unauthorised activities which have the potential to cause environmental damage. The council works closely with the Police, Surrey Fire and Rescue and other emergency services to ensure anti-social behaviours are prevented as much as possible and on heathland sites a fully developed system of fire breaks is created and maintained.

The council is committed to undertaking our statutory duties regarding blue-green algal events and invasive plant species across the borough where there is an impact on council land.

The council also recognises that providing opportunities for the public to engage with the natural environment, enjoying the mental and physical benefits of the green gym, can foster increased respect for the local environment with associated biodiversity gains.

8 Policy Background

8.1 International Context

In August 2021 the Intergovernmental Panel on Climate Change (IPCC) confirmed that human influence has warmed the atmosphere, ocean, and land, resulting in widespread and rapid changes around the planet. Many of these are irreversible and will be evident for many centuries and millennia. Their impacts will increase temperature extremes and heavy rainfall events, resulting in droughts affecting agriculture and significantly impacting our day to day lives around the planet; with many of these already being felt at a global, national, and local level.

Climate change has a considerable influence on biodiversity at all levels. We must remain alert to understanding the changing local threats to biodiversity in all their forms and ensuring appropriate action is taken to mitigate and where possible reduce and remove these.

Action at all levels across society is essential to combatting climate change and its impacts on biodiversity.

8.2 County context

In 2017, Surrey's State of Nature reported a 56% decline in wildlife species populations between 1970 and 2013 in Surrey (Waite, 2017) and (Surrey Nature Partnership, 2019c), reflecting a national decline (State of Nature Partnership, 2019)

Surrey is one of the 15 most populated counties in the U.K, resulting in significant pressures to biodiversity from development leading to habitat degradation, fragmentation, and loss.

The last few years has shown us how ruptures in ecosystems can have detrimental impacts to human health and wellbeing and affect food and water supplies. Protecting biodiversity is key to limiting the impact of climate change.

8.3 Borough context

The council recognises its role in mitigating the effects of climate change, both as a community leader and through the services it provides. This reflects the powerful voice of the growing population who are demanding that individuals, companies, organisations and governments take responsibility for their actions and take steps to reduce, reuse and recycle, thereby minimising their carbon footprint and contributing to the protection and enhancement of our natural world.

This was supported by residents in 2020 following a public consultation where 70% of respondents indicated their desire to see Waverley Borough Council lead on climate change action (Waverley Borough Council, 2020).

In response to this feedback the council declared a climate emergency and committed itself to being carbon neutral by 2030 recognising the need to:

- Mitigate the effects of the climate and biodiversity crisis as a community leader, through the services it provides and the management of land under its control
- Support and encourage efforts to promote biodiversity across the borough through its influence over the planning process and its engagement with other stakeholders

Waverley Borough Council has adopted a Carbon Neutrality Action Plan that focuses on the following seven themes (Waverley Borough Council, 2019):

- Organisational emissions
- Active travel and air quality
- Energy generation
- Built environment (housing and planning)
- Waste and resources
- Land use and adaptation
- Supporting a green economy

One of the key actions of the adopted Carbon Neutrality Action Plan was the development and implementation of a Biodiversity Policy and Action Plan that enhances the natural environment. This policy complements the Pesticide Policy (Waverley Borough Council, 2020) and Tree and Woodland Management Policy (Waverley Borough Council, 2022) to ensure that the council:

- Manages and monitors habitats within the borough to maximise biodiversity
- Provides leadership across the borough to inspire others
- Supports residents, parishes, and local initiatives to promote biodiversity

This document forms the council's Biodiversity Policy and Action Plan. It applies to the current and future open and greenspace managed by the council and provides a framework for biodiversity consideration across all the council's activities.

In delivering its duties, Waverley Borough Council's Biodiversity Policy must adhere to relevant legislation, as detailed in Appendix 1.

This Biodiversity Policy must complement other policies including:

- Local Plan Part 1: Policies NE1, NE1, NE2, NE3, CC1, CC2 and CC3 (Waverley Borough Council, 2018)
- Emerging Local Plan Part 2: Policies DM1, DM6, DM9 and DM11 (Waverley Borough Council, 2020b)
- Climate Emergency Action Plan (Waverley Borough Council, 2019)
- Pesticides Policy and Action Plan (Waverley Borough Council, 2020)
- Tree and Woodland Policy and Action Plan (Waverley Borough Council, 2022)
- Local policies detailed in Table 2 (below)
- Surrey County Council's Tree Policy (Surrey County Council, 2020).
- Biodiversity Opportunity Area Policies (Surrey Nature Partnership, 2019a)

Table 2: Local policies linked to Biodiversity within the Borough

Policy reference	Objectives
(Farnham Town Council, 2021)	<ul style="list-style-type: none"> • Working in partnership • Ensuring all sites in ownership have 10-year management plan • Strengthen wildlife corridors • All sites owned and managed to achieve status of Local Wildlife Site • Protection of species and habitats • Review of planning application considering latest guidance in relation to protected species and habitats <p>Review policy every five years</p>
(Haslemere Town Council, 2021)	<ul style="list-style-type: none"> • Policy H9: Policy to support the protection and enhancement of trees and native hedgerows • Policy H11: Identified suitable local greenspaces and include Green Fingers that provide connectivity across the landscape • Policy H12: details measures to protect and enhance the ecological network across the Neighbourhood Plan area • Review Neighbourhood Plan in 2032 <p>In addition to the above, the Haslemere Biodiversity Project works with the local community to support and deliver local initiatives such as developing a network of hedgerows and undertaking surveys to identify measures to better manage river corridors to promote riparian species such as otter and water vole.</p>
(Bramley Parish Council, 2017)	BNP-E2: protects and enhances connectivity and free movement of wildlife along wildlife corridors and habitats
(Godalming and Farncombe Neighbourhood Plan Group, 2019)	GOD12: provides protection for Godalming's tree-lined hillsides and recognises their importance to the character and setting of Godalming and Farncombe, development is expected to preserve the profile of the skyline and ensure buildings are not unduly prominent.

Policy reference	Objectives
(Witley Neighbourhood Plan Group, 2020)	<ul style="list-style-type: none"> • Policy NE1 aims to maximise biodiversity through the creation of coherent ecological networks and protecting existing ecological assets. • Policy NE2 aims to protect trees and hedgerows <p>Policy NE3 requires methods to appropriately assess the impact of development on biodiversity. Development should consider and incorporate biodiversity features.</p>
Wonersh Environmental Advisory Group (personal communication)	<ul style="list-style-type: none"> • Although no specific policies have been developed, the group has been proactive in managing open spaces for biodiversity including invasive species management, undertaking wildflower trials and hedgerow planting. <p>Actions are published on their Facebook page.</p>
(Cranleigh Parish Council, 2021)	<ul style="list-style-type: none"> • Policy CRAN6 Natural Landscape and Rural Character detailing that all development proposals should maintain and enhance the natural environment, retain landscape features and enhance rural character. • Encourage projects that include principles as defined in the policy; Identification of local green spaces

9 The Council's Greenspaces and Biodiversity resource

9.1 The Council's Land Holding

The council manages over 2200 ha of land, comprising more than 500 individual sites, which support: woodland, parkland, grasslands, heathland, wetlands, watercourses, and farmland. As well as amenity spaces and public open spaces, cemeteries, churchyards, and road verges. Some of these sites are protected:

- By law:
 - Special Protection Areas
 - Special Areas of Conservation
 - Sites of Special Scientific Interest
 - Local Nature Reserve
 - Local Geological sites

- Through planning policy:
 - Sites of Nature Conservation Importance
 - Common land

Further information on council managed sites is provided in Appendix 2, including their level of protection, key species, and partnerships. Sites protected by law and planning policy including those managed by the council are presented in Figures 1, 2 and 3.

The council is predominantly responsible for managing these sites, except where they are leased to third parties. The services are delivered through contractors and the Greenspaces Team supported by volunteers.

Management plans have been developed for several of the sites containing common land or protected in law, however none have been developed for other open spaces, such as road verges, parks, cemeteries and churchyards and housing estates. Management plan expiry dates are presented Appendix 2.

9.2 Biodiversity Opportunity Areas (BOAs)

The council will take a targeted approach in improving the management of sites within designated BOAs as well as restoring and re-creating Habitats of Principal Importance (HPI) in line with conservation priorities across sites.

9.2.1 What are biodiversity opportunity areas?

The Surrey Nature Partnership defines Biodiversity Opportunity Areas (BOAs) as: “a spatial concentration of already recognised and protected sites for wildlife conservation (its ‘Foundation’ sites), inside a boundary that also includes further but

as yet un-registered ‘Priority habitat’ types (plus some other essentially undeveloped land-uses); all of which have common and contiguous geological, soil, hydrological and topographic characteristics to those of the Foundation sites”. As such, BOAs represent those areas where improved habitat management, as well as efforts to restore and re-create Priority habitats will be most effective in enhancing connectivity to benefit recovery of Priority species in a fragmented landscape. They are therefore the basis for achieving recovery of a coherent and resilient ecological network in Surrey (Surrey Nature Partnership, 2019b)

Further information relating to BOAs can be found in [Biodiversity opportunity areas Surrey nature partnership 2015](#)

9.2.2 Biodiversity Opportunity Areas in the Borough

Eight Biodiversity Opportunity Areas (BOAs) are located within the Borough. Priorities associated with these are presented in Table 3 (as obtained from (Surrey Nature Partnership, 2019). Further details are available within each policy statement for the relevant BOA.

Table 3: Biodiversity Opportunity Areas within Waverley Borough Council

BOA Area	BOA Number	BOA Name	Priorities
North Downs	ND01	North Downs Scarp; The Hog’s Back	Opportunity to steer restoration obligations to complement adjacent BOA
Wealden Greensands	WG01	Puttenham & Crooksbury	Priority habitat enhancement & creation opportunities adjacent to BOA
	WG02	Farnham Heath	Priority habitat restoration potential; Heathland, Acid grassland, Native woodland. Important Sand lizard populations requiring connectivity management Native woodland & Heathland restoration opportunities realised by private owner
	WG03 – WG04	Thursley, Hankley & Frensham Heaths/Devil’s Punch Bowl & Hindhead Heaths	Priority habitat restoration & creation to enhance key corridor opportunities between BOAs

BOA Area	BOA Number	BOA Name	Priorities
Low Weald	WG04 – LW01	Devil's Punch Bowl & Hindhead Heaths/Chiddingfold & West Weald Woodlands	
	WG05	Hascombe, Winkworth & Hydon's Heath & Woodlands	Wetland habitat creation opportunities, inc. Reedbeds
	LW01	Chiddingfold & West Weald Woodlands	SNCI enhancements, Native Woodland, Meadows, Ponds restoration & creation opportunities under any proposed development scheme
Rivers	R04	River Wey & tributaries; Upper	Opportunity for Floodplain grazing, marsh creation/restoration & reconnecting meanders, in-channel enhancements, connectivity through SANG proposals
		River Wey; Cranleigh Waters	Priority habitat creation/restoration opportunities alongside canal restoration project

Figure 1: Waverley Borough Council Biodiversity Strategy: Statutory and Non-statutory Designated Sites for Nature Conservation – Summary Overview

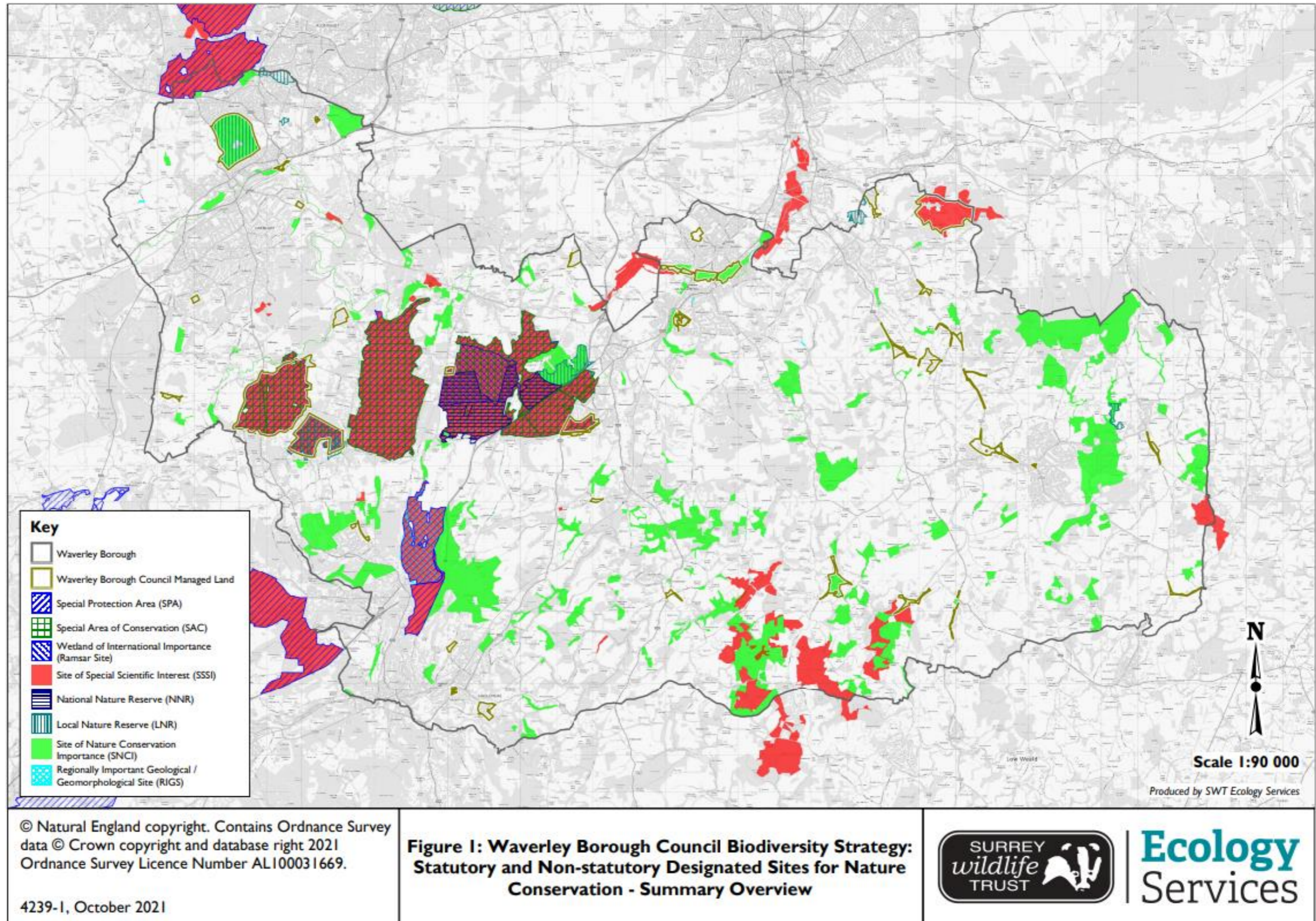
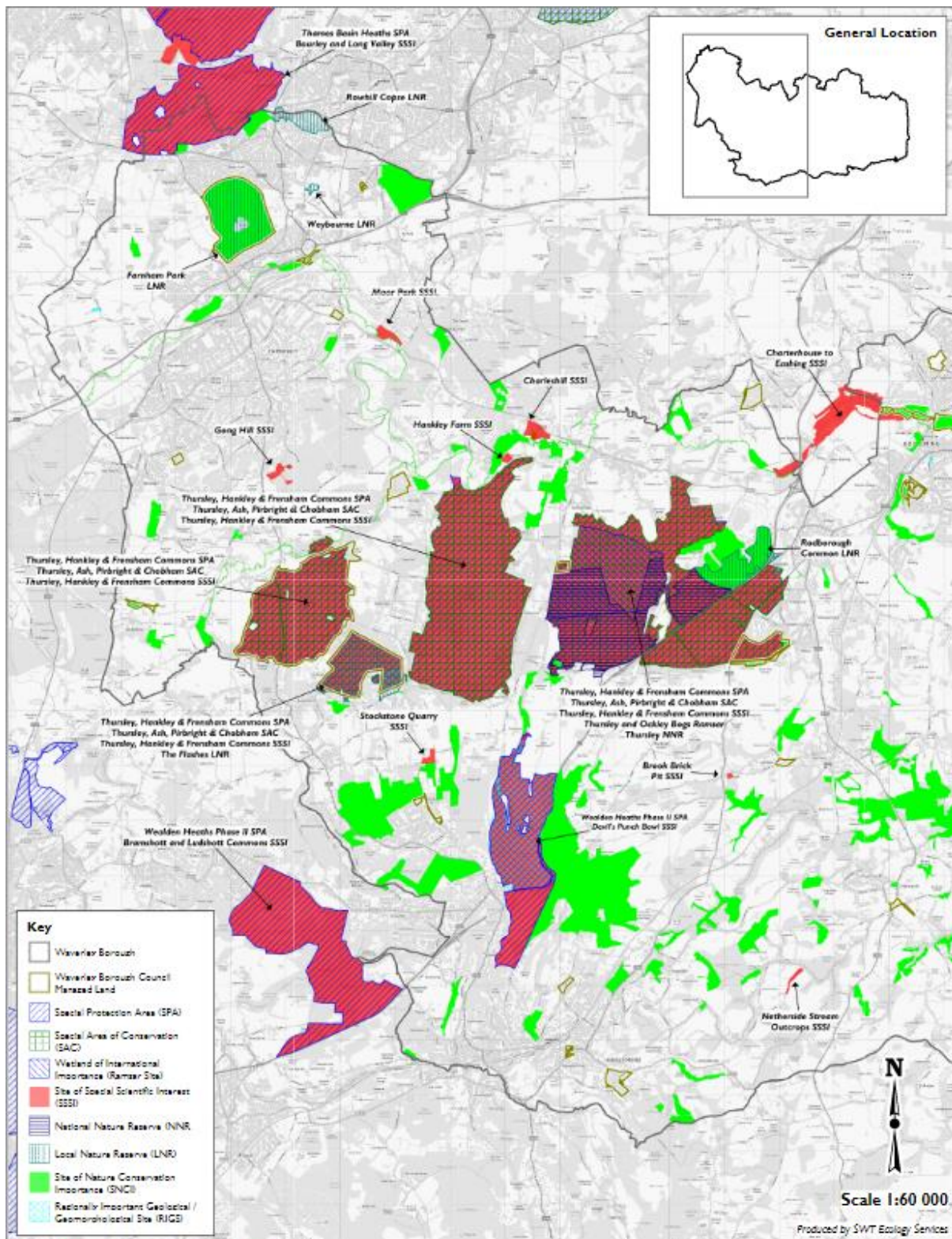


Figure 2: Waverley Borough Council Biodiversity Strategy: Statutory and Non-statutory Designated Sites for Nature Conservation – East



© Natural England copyright. Contains Ordnance Survey data © Crown copyright and database right 2021. Ordnance Survey Licence Number AL100031669.

4239-1, October 2021

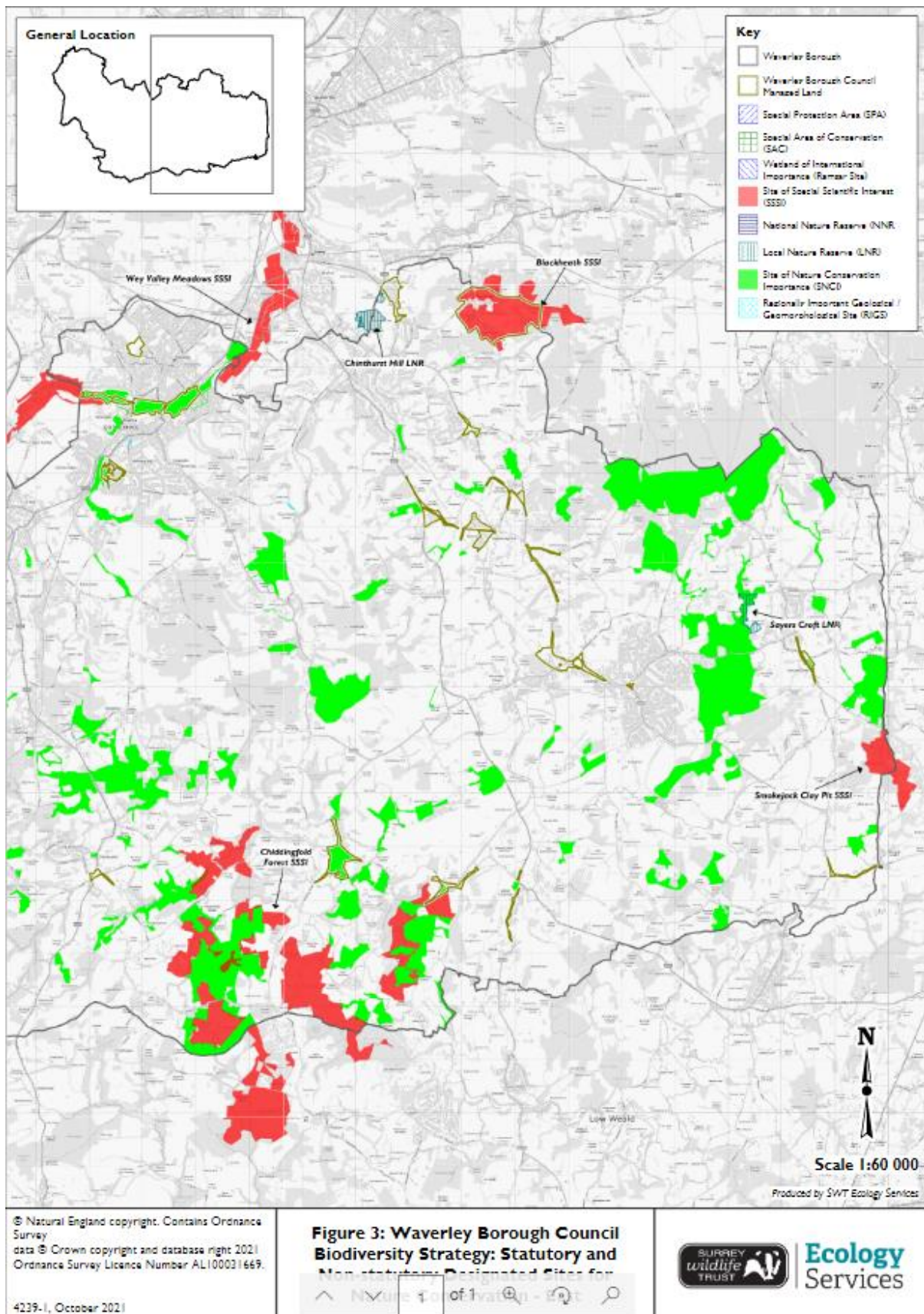
Figure 2: Waverley Borough Council Biodiversity Strategy: Statutory and

Non-statutory Designated Sites for Nature Conservation - West



Ecology Services

Figure 3: Waverley Borough Council Biodiversity Strategy: Statutory and Non-statutory Designated Sites for Nature Conservation – West



9.3 Waverley Borough Habitats

Waverley borough supports a diverse range of habitats across 15 landscape characters (HDA, 2015) including:

- Chalk down with woodland
- Open chalk farmland
- Chalk ridge
- Wooded north down
- Open greensand hills
- Wooded greensand plateau
- Greensand valley
- Wooded greensand hills
- Rolling clay farmland
- Wooded rolling clay lands
- Mudstone plateau
- River floodplain
- River valley floor
- Sandy woodland
- Wooded low Weald

Broadly these habitats can be summarised as:

- Woodland and parkland
- Grasslands
- Heathlands
- Wetlands
- Watercourses
- Green spaces
- Cemeteries and churchyards
- Road verges
- Hedges

A brief description of these is provided below.

9.3.1 Woodland & Parkland

Surrey is the most wooded county in England, with an estimated 21% woodland cover (Waite, 2017) (Surrey Nature Partnership, 2020), whilst the borough itself has an estimated 34%. This is compared with a national average of 13%.

Woodland habitats of principal importance in the borough include (Waverley Borough Council, 2018a):

- Mixed deciduous woodland
- Beech and Yew woodland
- Wet woodland
- Wood-pasture and parkland
- Traditional orchards
- Scots Pine, self-seeded as well as plantations, often on poor soils or (ex-) heathland sites

Much of the woodland and parkland habitat are within private ownership. Woodland and parkland provide valuable habitat for several protected species and species of conservation concern, and common species, such as higher and lower plants, birds, mammals, and invertebrates.

9.3.2 Semi-natural grasslands and heathlands

The borough supports a range of grassland and heathland habitats including (Waverley Borough Council, 2018a):

- Lowland meadows
- Lowland calcareous grassland
- Floodplain grazing marsh
- Lowland heathlands (lowland fens)

These habitats are generally created and maintained through early clearing of woodland to develop agriculture and as such are always in a state of flux, shifting towards successional scrub and young woodland (Waite, 2017). The rarer habitats, such as lowland calcareous grassland and lowland fens, are often already protected habitats and are managed for conservation purposes, however some pockets of these habitats are likely to be found in private ownership. These habitats are key to higher and lower plant, invertebrate, mammal, reptile, amphibian, and bird species.

9.3.3 Wetlands and watercourses

Wetland is a broad term covering several types of habitats (Waite, 2017). Within the borough, this includes the following habitats of principal importance (Waverley Borough Council, 2018a; Waverley Borough Council, 2018b):

- Reedbeds
- Rivers
- Standing open water
- Ponds

Key wetland features within the council's management include Frensham Great Pond, including a reedbed system in this location. Several other waterbodies are present across the borough, with a large population of Great Crested Newts around the Cranleigh area. The council works with The Environment Agency across the Lammas Lands, Godalming, which is managed for overwintering wader species. The site is being grazed during summer months. Weybourne Local Nature Reserve is also an important wetland habitat. Wetlands are key for higher and lower plant, invertebrate, amphibian, fish, mammal, reptile, and bird species.

9.3.4 Farmland

Farmland is abundant in the Borough, with most of the borough being rural (Waverley Borough Council, 2018b). Agriculture accounts for 16% of the borough's total business revenue, demonstrating its importance in the local economy. The key habitat of principle importance for biodiversity is arable field margins (Waverley Borough Council, 2018a). This habitat is key for rare flora species, in addition to bird and invertebrate species.

9.3.5 Green Spaces

Whilst most of the population live in the main urban settlements of Farnham, Godalming, Haslemere and Cranleigh (Waverley Borough Council, 2018b), many residents enjoy living in the borough's villages and hamlets which form a key element of the borough's rural character. Both the urban and rural areas of the borough are well served by green spaces. Green spaces are those that can be used by members of the public for leisure and in this case also include recreation grounds, parks, allotments, green spaces within housing estates and senior living areas.

Although the primary purpose for these spaces is the provision of amenity to people they provide opportunities for common bird species, mammals, reptiles, amphibians and higher and lower plant and invertebrate species. Opportunities to enhance these for biodiversity whilst continuing to provide amenity to the population exist and should be progressed.

Within land under the council's control changes have already been made to the management practices to support the local flora and will continue to be made on additional sites.

9.3.6 Cemeteries and Churchyards

Most cemeteries and churchyards are managed by local town or parish councils; however, the council manages Sunvale Cemetery in Haslemere and is also responsible for managing nine closed cemeteries that are important refuges for wildlife.

Many cemeteries or churchyards, still support the rich floral diversity that was once common in Britain before modern farming practices destroyed more than 80 percent of our wildflower grasslands. Meadow saxifrage, pignut, bulbous buttercup, cuckoo flower and orchids can flourish between graves. It can be relatively easy to re-establish and increase the numbers of locally rare plants found originally in semi-natural grasslands by altering the grass management practices.

Alterations to the grass management of cemeteries and churchyards that the council manages have already occurred to support wildflowers, insects and pollinators. Following the adoption of the Living Churchyard campaign supported by the Surrey Wildlife Trust and the Diocese of Guildford.

9.3.7 Road Verges

The council is responsible for the management of roadside verges across the borough as part of an agency agreement with Surrey County Council highways department, and also as a landowner. This accounts for over 106 ha of roadside verges. Road verges support a diversity of habitats and are key to providing connectivity to biodiversity across the landscape. Over 700 species of wildflower grow on the U.K.'s road verges, accounting for nearly 45% of the U.K.'s total flora (Plantlife, 2021), supporting invertebrate species such as bees, butterflies and bugs, in addition to birds, mammals and reptiles.

However, our road verges are under considerable pressure. Priorities for safety and access, alongside budget constraints, a desire for neatness and difficulties with the collection of litter and grass clippings all mean that enhancing their wildlife value is often low on the list.

During 2021 the council trialled Plantlife's "No Mow May" and "Let it Bloom June" campaigns to start addressing biodiversity losses and to promote our verges as wildlife refuges. A revised "No Mow May" campaign was delivered in 2022. Over the coming years grass cutting operations will be constantly reviewed and improved to ensure the optimum areas are targeted and that the council embeds Plantlife's 'The Good Verge Guide' wherever possible as one strand of our overall strategy to improve biodiversity across the borough. Vegetation surveys will be required to identify those areas of grass verges where grass cutting operations could be amended further to promote a more biodiverse flora to better support pollinators. These surveys will also be useful to identify areas where grass species dominate and where the council could focus on changing the species composition through improved management.

From April 2022 Surrey County Council will taking back the management of the majority of roadside verges in the borough, there will however still be some areas of roadside verge remaining under council control.

9.3.8 Hedgerows

Hedgerows are vital systems of connectivity as they criss-cross the landscape not only providing valuable habitat for our wildlife but connecting other habitats that would be otherwise be fragmented.

Habitat fragmentation limits the distribution of some species. Fragmentation is dangerous as isolated populations are more at risk of local extinction and without corridors the populations cannot recover. The wildlife corridors provided by hedgerows can alleviate negative impacts of this fragmentation by allowing movement between other areas of habitat. Flying insects like butterflies need sheltered conditions provided by hedges to be able to gain and retain the heat necessary to fly.

Protected species, such as hazel dormouse, bats, reptiles and great-crested newt require well connected networks of hedgerows, rather than individual hedgerows, emphasising the importance of hedgerows at a landscape level. Bats use them to commute between roosting and feeding sites and the shelter hedges provide makes it easier for them, and importantly their insect prey, to fly on windy nights.

Poor quality, fragmented hedges are also known to be detrimental to several farmland birds. Understanding the importance of hedgerows in our countryside and promoting the restoration, health and extent of these connectivity superhighways will be crucial in achieving positive biodiversity and working ecological systems.

10 Ecological Threats and Challenges

One of the biggest threats to Surrey's countryside comes from the climate and ecological emergency. Wildlife habitats are at risk, and many of our native species face extinction. The climate emergency and the impact of human activity are degrading the natural environment, resulting in the loss of biodiversity. Biodiversity is in decline and a third of Surrey's wildlife is now either extinct or heading that way.

In 2017 the State of Nature Report for Surrey surveyed 4,242 species and concluded that:

- 12% were now extinct
- 21% were under threat
- 15% were stable
- 3% were increasing
- 49% were not in trouble

Understanding the ecological threats to biodiversity within Waverley is critical in the development of this Biodiversity Policy to ensure that it reflects the actions required to mitigate these.

The ecological threats are presented in Table 4, along with the proposed mitigation in relation to the Biodiversity Policy and the relevant policy number.

Table 4: Ecological threats and challenges and proposed mitigation measures

Ecological Threat and Challenge	Source	Impact on biodiversity	Proposed mitigation relevant to Biodiversity Policy	Relevant Biodiversity policy statement number
Climate change	Increased carbon emissions	<ul style="list-style-type: none"> Loss in biodiversity Increased invasive non-native species and pests Significant changes to weather patterns including increased drought, flooding, fire risk. Changes to species ranges either reduction or expansion. 	<ul style="list-style-type: none"> Increased habitat resilience Habitat management to improve condition Improved education programme Increased collaboration across community Monitoring of performance Close liaison and partnership working with Surrey Fire & Rescue, staff training and specific fire management plans for heathland sites Liaison with Development Management to ensure major projects and those affecting the Nature Recovery Network have appropriately considered impacts to biodiversity. 	1, 2, 4, 5, 6, 7, 8, 9, 10, 11, 12, 13
Pollution	<p>Pesticides, dog fouling, litter, unauthorised motor vehicles, untreated storm-water runoff.</p> <p>Air pollution from smoke, vehicle exhausts and particulates such as tyre rubber and microplastics.</p>	<ul style="list-style-type: none"> Habitat degradation Habitat loss 	<ul style="list-style-type: none"> Increased habitat resilience Habitat management to improve condition Improved education programme Increased collaboration across community Monitoring of performance 	1, 2, 4, 5, 6, 7, 8, 9, 10, 11, 12, 13
Disturbance	<p>Free roaming people and domestic pets</p> <p>Increased visitor use</p>	<ul style="list-style-type: none"> Disturbance to breeding birds, resulting nest success 	<ul style="list-style-type: none"> Education programme 	6, 7, 12
Habitat loss	<p>Unauthorised or inappropriate development of common land and wildlife habitats. All development that does not deliver biodiversity net gain will cause habitat loss.</p>	<ul style="list-style-type: none"> Habitat loss and degradation 	<ul style="list-style-type: none"> Liaison with Development Management to ensure environmental impacts have been considered at the planning level. 	5
Inappropriate habitat management	<p>Poorly designed management plan</p> <p>Poorly implemented management plan</p> <p>Lack of management plan</p> <p>High frequency mowing</p> <p>This applies equally to residents' gardens, e.g., excessive hard landscaping, intensively treated lawns, artificial turf, use of pesticides.</p>	<ul style="list-style-type: none"> Habitat degradation Habitat loss 	<ul style="list-style-type: none"> Education programme across the delivery team (contractors and employees) Ensure a recent management plan has been developed for each habitat/open space type and ensure biodiversity measures are incorporated Land within a BOA to be managed in line with the BOA objectives 	1, 2, 6, 7, 9, 10, 11, 12, 13, 14
Invasive non-native species and pests	<p>Introduction of invasive non-native species through poor biosecurity measures</p>	<ul style="list-style-type: none"> Habitat degradation Habitat loss 	<ul style="list-style-type: none"> Development of best practice measures to be shared with employees, contractors, and partners across Waverley. Implementation of biosecurity measures during habitat management works. Control of invasive species on council managed land. 	1, 6, 7, 10, 14
Resource and investment	<p>Budgetary restrictions</p>	<ul style="list-style-type: none"> Lack of funding and staff resource to implement management and monitoring strategy. 	<ul style="list-style-type: none"> Enhance volunteer opportunities across the borough. Link to social prescribing opportunities. Identify and secure alternative funding opportunities. 	3, 4, 8

11 Habitat management

11.1 Habitat Designation

The green spaces that the council manages can be broadly divided into three categories:

- Protected sites
- Common land
- Other sites (road verges, housing areas, amenity spaces, parks & recreation grounds and cemeteries and churchyards)

11.1.1 Protected sites

The council has a legal obligation to look after sites that are protected by law (statutory designated sites). These include SPA, SAC, SSSI and LNR. Higher Level Stewardship funding is used to manage these sites and management plans have been prepared for these. Site management is overseen by the council's countryside ranger team. Management plans detail the monitoring regime, along with reporting requirements, to ensure the management objectives are being met.

11.1.2 Common land

The council manages large and small areas of Common land spread across the borough, often the above designations overlap some of these areas of Common land. Accordingly, some of these sites have management plans prepared whilst other areas do not. Site management is overseen by a combination of the council's countryside ranger team, tree officers and green spaces officers.

11.1.3 Other sites, including woodland and grassland.

There is a great variety of these sites across the borough in urban and rural areas, often being the nearest greenspace that resident's access for recreation, leisure, and dog walking activities. Site management in the main is overseen by the council's greenspace and tree officers, however some sites are ranger led and supported on occasion by volunteer groups. Although in general, most of these sites do not have a management plan in place, most woodland sites have or are in the process of getting, a woodland management plan which incorporates biodiversity (see Appendix 2).

11.2 Management Plans

Management plans would be essential for the successful management of land. They provide an assessment of the biodiversity features present, threats and details of how they are best managed to maximise biodiversity. The absence of suitable information on the current ecology and habitat condition of a site (baseline condition) makes it challenging to make informed decisions on management measures. Ecological threats

such as climate change, habitat degradation and visitor pressures can take some time to result in a measurable change in the local ecology. Therefore, undertaking surveys using a consistent methodology is crucial to ensuring the information collected can be used to make meaningful decisions with regards to management. The absence of data can mean the management measures implemented do not result in the desired effect and are detrimental to the local ecology.

Standard habitat condition assessment methods currently exist, and it is recommended that these are followed consistently across all sites managed by the council. Surveys would need to be undertaken by experienced and qualified ecologists on a contracted basis.

Once the information is collated it will be possible to determine the priorities in relation to habitat creation and management, focusing on areas that are of poor or moderate condition that, if improved, are essential to creating and enhancing habitat connectivity across the landscape as well as sites that are in good condition, but which without appropriate ongoing management would quickly deteriorate with an associated loss of biodiversity. This could be supported by aerial imagery to identify key areas deficient in habitat connectivity and liaising with community groups. Identifying how these relate to BOAs and BOA policies is also essential for providing a coherent and robust biodiversity approach across the borough.

The absence of a management plan does not mean a site is poorly managed but does mean it is harder to ensure the management objectives are being understood and met. The core of this policy is the enhancement and maximisation of biodiversity and habitat connectivity across the Borough; therefore, it is vital to ensure that consistent management plans and strategies are prepared for all sites being managed by the council.

11.3 Status of site management plans with the Council

The council currently has 48 active management plans and statements that cover the statutory designated sites, non-designated sites, and common land sites it manages (Appendix 2). In addition to these site management plans the council has or is in the process of producing 27 woodland management plans for most of the woodland sites it manages (Appendix 2).

Furthermore, to ensure biodiversity opportunities are maximised across all sites managed by the council management plans should be considered for:

- Parks, recreation grounds and greenspaces
- Cemeteries and churchyards
- Housing estates and senior living areas
- Road verges

These management plans or statements do not need to be extensive, however they do need to have clear objectives, detail management measures, and include a robust monitoring strategy to report on progress.

Maintaining current and comprehensive site management plans and woodland management plans will allow the council to deliver its Biodiversity Policy coherently across the borough, provide leadership to other landowners and will inform the public on the council's progress in delivering this Biodiversity Policy.

Policy statement 1

Habitats the council manages should be in good or very good condition and we will prioritise management and habitat creation to maximise biodiversity and connectivity across the landscape.

Policy statement 2

The council will ensure there is a current habitat management plan or statement for all sites or habitat types it manages and that these fully consider habitat connectivity.

12 Biodiversity Funding

12.1 Existing Funding Sources

The main source of funding for Parks and Countryside management works is obtained through the council's revenue and capital budget programme. The Parks and Countryside team plan revenue spending in line with service priorities and submit annual capital bids to cover projects requiring additional funding where revenue budgets are unable to cover costs.

The costs of managing key protected sites are currently partially covered by Higher Level Stewardship (HLS) and Countryside Stewardship (CS) grants. These will gradually be transferred to the Environmental Land Management schemes (ELMS) in the future. These schemes should be supplemented by council budgets to fully meet all the management objectives. The new ELMS schemes have not yet been implemented; the expired HLS & CS funding schemes are currently rolling over yearly. It is not yet known what the funding amounts will be for ELMS schemes, and we will not know until the application process has opened and been decided.

Appendix 4 outlines the current budget situation of the council in respect to current service delivery and identifies where further funding sources will be required in order to deliver the action plan of the Biodiversity Policy.

12.2 Other funding sources

Other sources of funding include CIL which is a charge to support the new infrastructure required to support new development and Section 106 agreements.

Natural Capital funding opportunities refers to financial investments to conserve the value of the natural environment for the long term (Natural Capital Coalition, 2016). Opportunities to attract Natural Capital funding should be explored by the council to contribute towards the funding of managing open spaces.

Defra and the Forestry Commission have recently been developing funds for tree planting and management amongst other aspects of landscape and biodiversity improvement and officers have been successful in combination with Surrey County Council and some of the other Surrey Boroughs and Districts, to secure funding for tree planting in 2022. It is expected there will be further funds released from Government agencies in due course and further bids will be made as and when funding becomes available and is appropriate for the council's objectives.

Another source of funding for improving Biodiversity could come from the local community either through, donations, contributions or specific community group grant funding.

There is also an opportunity for funding from Town and Parish Councils who have a desire to improve their local biodiversity but do not have available or suitable land themselves to deliver this.

12.3 Biodiversity Net Gain

Biodiversity net gain is a method of determining where development can have a positive impact on biodiversity. The Environment Bill received Royal Assent in 2021 and following a two-year transition period all eligible planning applications will need to demonstrate projects will result in a minimum 10% biodiversity net gain. Biodiversity net gain is calculated and interpreted following eight principles and rules (Panks, et al., 2021).

The Environment Act 2021 includes a new requirement for Local Nature Recovery Strategies (LNRS), and these are intended to integrate with the National Recovery Network, and with the new ELMS brought in by the Agriculture Act 2020.

The LNRS will include a statement of biodiversity priorities for the strategy area made up of:

- A description of the strategy area and its biodiversity.
- A description of the opportunities for recovering or enhancing biodiversity, in terms of habitats and species in the strategy area.
- The priorities, in terms of habitats and species, for recovering or enhancing biodiversity (considering the contribution that recovering or enhancing biodiversity can also make to other environmental benefits).
- Proposals as to potential measures relating to those priorities

This is further supported by (CIEEM, CIRIA, IEMA, 2019) that details, among other things, how to implement biodiversity net gain good practice principles within each stage of a development project's life cycle. The key principles referred to as the mitigation hierarchy must be implemented to habitats and species throughout a project life cycle. These are to:

- Avoid impacts where possible through careful project design
- Minimise impacts where these cannot be avoided
- Restore habitats that are retained or could be impacted by the development
- **As a last resort**, compensate for the loss of or damage to habitats. As a priority these should be compensated for on site, and if this is not possible, offsite offsets can be considered.

The current rate of habitat loss due to development, urbanisation and land use change puts significant pressure on biodiversity (Intergovernmental Science-Policy Platform

on Biodiversity and Ecosystem Services, 2019). The State of Surrey's Nature report reflects the continued threat to biodiversity at a local level (Surrey Nature Partnership, 2019c). It is therefore key to ensure ambitious targets are set to halt, and where possible reverse biodiversity declines within the Borough.

The Surrey Nature Partnership (SNP) is a Local Nature Partnership that is formally recognised by the Department of Environment, Food and Rural Affairs (DEFRA) and has the purpose of championing the value of the natural environment in decision-making at all levels. In November 2020, Surrey Nature Partnership produced a position statement recommending that Surrey's planning authorities adopt a 20% minimum biodiversity net gain for all development (Surrey Nature Partnership, 2020a).

In reviewing the appropriate level of gain, Surrey Nature Partnership assessed:

- Evidence from the national cost/benefit analysis (DEFRA, 2018)
- Surrey's rate of biodiversity loss (Surrey Nature Partnership, 2019c)
- Natural capital approach (Surrey Nature Partnership, 2015b)

DEFRA indicates in its cost benefit analysis that 10% is the lowest level of net gain that is required to deliver a genuine net gain or a no net loss; whilst the Natural Capital Committee "indicates that a net gain of 10% or above is necessary to give reasonable confidence in halting biodiversity decline (Natural Capital Committee, 2019)."

The council wishes to support local developments that incorporate ambitious opportunities for biodiversity. This can be achieved by using land managed by the council to deliver biodiversity net gain offsets required by developments that cannot deliver biodiversity net gain on their development site.

Where these opportunities are identified, the council, in line with its development plan, will review the information provided by the ecologist and ensure this has followed the mitigation hierarchy and will aim to deliver 20% biodiversity net gain reflecting the recommendations from Surrey Nature Partnership. Opportunities will also need to link to local priorities, such as reflecting the BOA policies or other initiatives, where these are relevant.

Where the council is undertaking its own developments, such as delivering housing schemes, it will aim to deliver 20% biodiversity net gain associated with each development. The council will need to ensure that the financial impacts of this ambition are fully costed into any planned development schemes.

There will of course be circumstances where this is either not possible or practical to deliver 20% biodiversity net gain, in these situations the council will endeavour to

deliver as much as possible increases over the minimum 10% biodiversity net gain required by law., or as set out in the council's development plan.

12.4 Biodiversity net gain income

Delivering biodiversity net gain offsets for third parties can provide a source of income for the council to enhance biodiversity on its land where perhaps it would not normally have these funds available to do so. This is currently a very relevant area of discussion and development across conservation organisations and over the next few years will become an established part of planning processes.

Natural England is currently developing a BNG sites register. This will include information about any site being used to deliver BNG. It will be publicly accessible and detail the baseline biodiversity value of the delivery site and the expected future biodiversity value of that site.

The delivery of BNG "offsets", or more correctly offsite BNG, should be linked to the LNRS.

Considering the above, several developers will be seeking biodiversity offsets to meet their biodiversity offsetting obligations. This could provide a source of income for the council. To determine the potential income that could be generated, the council will need to understand the potential biodiversity units that could be delivered within its landholding. To achieve this, the council will:

- Develop a register of offset opportunities by establishing current baseline biodiversity units, identifying measures to improve habitat condition, and determining the biodiversity units that can be delivered with the implementation of these management measures.
- Liaise with the Development Management team to identify third parties requiring offset opportunities.

Of note, the income generated through the biodiversity net gain scheme can only be used for habitat improvements to generate biodiversity net gains and cannot be used for other purposes. The council would need to do a cost-benefit analysis looking at different funding opportunities to determine the most economically viable options.

The council's Greenspaces team will therefore need to liaise regularly with the council's Development Management team, to ensure that such opportunities are identified.

Policy statement 3

The council will ensure the efficient use of existing resources and identify future opportunities for natural capital delivery by S106, Community Infrastructure Levy (CIL), or any other external funding wherever possible to maintain and improve greenspace infrastructure.

Policy statement 4

Where the council identifies suitable opportunities to accept biodiversity net gain offset funding on its own land, or where it is directly delivering projects, we will aim to deliver a minimum 20% biodiversity net gain for those developments wherever possible.

13 Planning

13.1 Planning Policy

Development Management is a core service within the council to deliver priorities for biodiversity throughout the borough. The Local Plan (Part 1 and Part 2) detail planning policies that relate to biodiversity that new developments need to consider, however collaboration across all council's services is essential to ensure biodiversity is protected and enhanced throughout all activities within the borough.

Currently there is a Climate and Sustainability Supplementary Planning Document 2022 (SPD) that is being prepared by the council's Planning Policy team, this details how the council will consider climate change when assessing planning applications.

The SPD will provide further guidance to support the following policies in the adopted Local Plan Part 1:

- Policy CC1: Climate Change
- Policy CC2: Sustainable Construction and Design
- Policy CC3: Renewable Energy Development
- Policy ST1: Sustainable Transport

The SPD is expected to cover the following:

- Use of renewable and low carbon energy supply systems in new developments
- Site layout, orientation of buildings and the landscape
- Climate change resilience and adaptation
- Use of sustainable resources and materials and sustainable management of waste
- Water efficiency
- Design to encourage use of sustainable forms of transport

Our planning policy service has indicated that the section on 'site layout, orientation of buildings and the landscape', is intended to provide guidance on trees, landscaping, local food growing, green infrastructure, integrating green infrastructure into development, linking of green spaces to make wildlife corridors and biodiversity net gain in green and blue infrastructure.

13.2 Consultation

More specifically, some of the major applications involve the creation of green spaces (e.g., green infrastructure, Suitable Alternative Natural Greenspaces (SANG)) which will need to be managed by the council therefore it is important that input is provided at the earliest opportunity to ensure this reflects the council's policy requirements.

Development Management should liaise with the Parks & Countryside team, requesting consultation responses for all major applications and applications where landscaping strategies have been submitted and any applications where SNCIs or common land are likely to be adversely impacted by a proposed development.

The Parks & Countryside team will then review the information to determine whether appropriate objectives have been considered in line with the Biodiversity Policy, BOA policies, local biodiversity objectives, have appropriately considered green infrastructure design and considered how the plans would contribute towards climate change resilience.

Policy statement 5

The council will ensure Development Management consults the Greenspaces team for planning applications that create new open spaces, have a landscaping strategy, impact common land and/or impacts a SSSI, NR SNCI, have implications for the LNRS, and/or are seeking BNG offsite opportunities.

14 Education

14.1 Securing successful delivery of policy

Education is critical for promoting action such that people can understand and address the impacts of the climate and biodiversity crises. Whilst the council can be a leader by its own actions, the successful delivery of this Biodiversity Policy requires all employees, contractors, local authorities, local community groups and residents to develop and enhance their knowledge, skills, values, and attitudes required to combat climate change and improve biodiversity.

The key areas of education are:

- Ensuring the policy principles are fully embedded within the council, its staff and contractors
- Supporting town and parish council and other local volunteer groups in delivering biodiversity initiatives by demonstrating best practice as a borough council and directing them towards the latest guidance
- Inspiring and guiding residents to better connect with biodiversity and open spaces, benefitting their physical and mental health

14.2 Methods of achieving education

14.2.1 Within the Council

To ensure the Biodiversity Policy is adhered to and embedded across the organisation and its activities, the council needs to identify training needs for its members, workforce, and contractors, specifically targeted for each team such that they can understand the relevance to their role.

This can be achieved by; appointing a biodiversity officer and supporting well-resourced, knowledgeable, and well-trained specialist staff who consult with the teams across the organisation and develop a bespoke training programme. Identifying key biodiversity champions across different sectors of the organisation that inspire others to act. Through this process, employees and contractors will be made aware of relevant legislation and policies so they understand their responsibilities and can make informed decisions that ensure the protection and enhancement of biodiversity throughout the borough. For some employees and contractors their actions can directly impact biodiversity, for example where they undertake habitat management, whilst for others such as office-based staff, the link between their actions and biodiversity may be less obvious. It is therefore essential to consult with the staff before training is provided to understand the training needs.

14.2.2 Town and Parish Councils and local community groups

Town and Parish Councils, along with other stakeholders, were consulted on the draft biodiversity policy. A key theme that emerged as part of the consultation was the need for the council to lead on biodiversity action and provide support in terms of best practice guidance. Many of the Town and Parish Councils have been developing their own biodiversity strategies and policies reflected in Neighbourhood Plans and other initiatives (Table 1). Throughout the consultation a lack of resources was identified as a limitation to delivering biodiversity enhancements at a local scale, with volunteers playing a key role for the delivery of habitat management at a local level.

Having a consistent approach across the borough is core to maximising biodiversity, therefore the council can support Town and Parish Councils and local community groups by ensuring these groups are invited to send representatives to the many County Council led forums including access to the Natural Nature Partnership and Land managers groups as well as other partnership meetings hosted by organisations such as Surrey Wildlife Trust and National Trust to provide information sharing and development opportunities.

14.2.3 Resident Groups

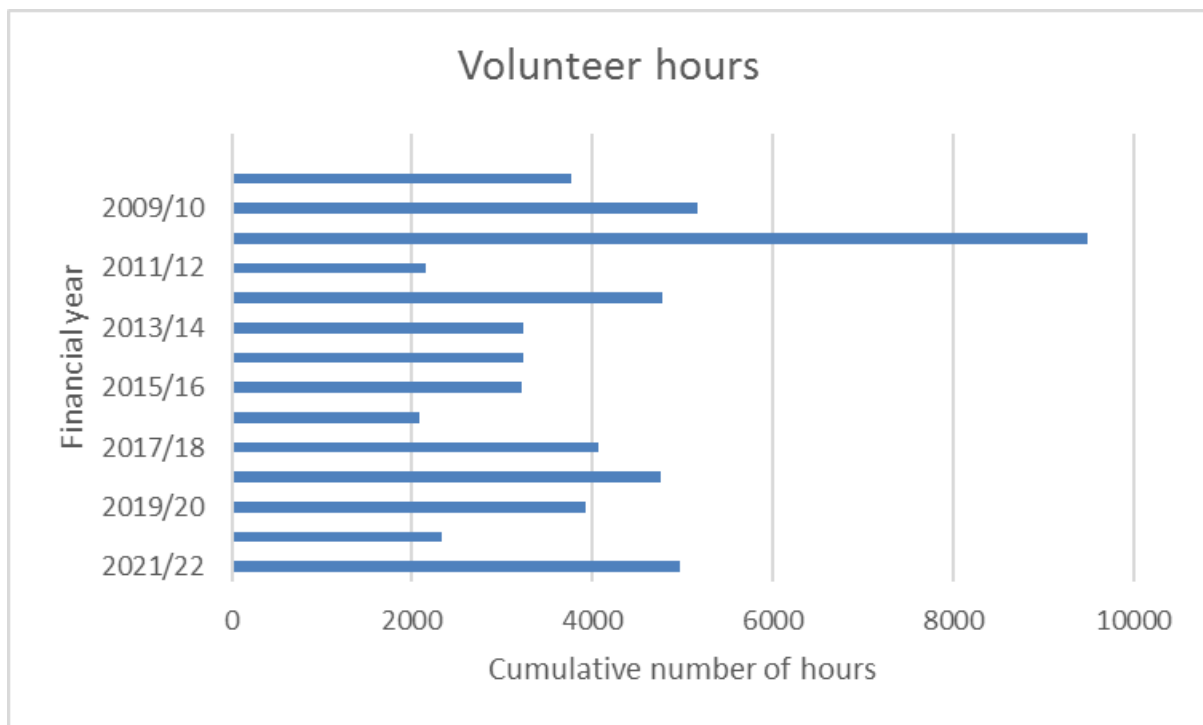
The council can support residents in promoting biodiversity by:

- Increasing its engagement with volunteers
- Promoting community involvement with green spaces and their management
- Identifying and communicating measures that businesses, residents and landowners can implement to benefit biodiversity

14.3 Benefits for the Council with Volunteer work

Volunteers play a crucial role in delivering habitat management across green spaces within the Borough. Currently the council has around 300 registered volunteers, with numbers increasing year on year. Over the last 14 years, volunteers have contributed approximately 57,000 hours to the council, saving the organisation over £629,000 (Figure 4). Volunteer effort is critical for the promotion of biodiversity and benefits the local community through physical and mental health well-being. Current volunteer programmes take place on sites that have the highest profile and greatest wildlife interest, including Frensham Common, Farnham Park, Mare Hill Common and Blackheath Common. Less frequent sessions take place on selected other council sites which have a particularly strong local community interest.

Figure 4: Summary of volunteer hours between FY 2008/2009 and 2021/2022



The sessions are open to all and are advertised on the council webpages, site posters, social media and in some instances through collaboration with a local resident's association. They are well received and attended by both residents and those living further afield. People value the opportunity to be involved in their local greenspaces and to work on sites of high conservation status.

The work carried out by volunteers during these sessions is varied but has a strong focus on habitat improvements and species conservation. Volunteers assist the council with clearing scrub from protected heathland, improving ponds for great crested newts and other species, removing invasive plant species from valuable wetland habitats, and woodland management such as clearing sunny glades, coppicing, and thinning of saplings. They are also involved in habitat creation projects such as sowing wildflower meadows, constructing tern rafts and building bug hotels.

Away from practical tasks, the council has also recruited several volunteers to carry out wildlife surveys on key sites on a regular basis, either during a fixed term period or all year round and recording sightings of a particular wildlife group such as birds or butterflies. These records are then sent to the council, and in some cases also national recording bodies and collated to provide a picture of the status of those species' groups recorded. This data allows the council to monitor trends, evaluate the impact of site management works, and if necessary, modify habitat management proposals accordingly.

Volunteers enable the council to make improvements to sites and undertake projects for which there would otherwise be staff or budgetary constraints. They help the council to do more with their resources and to complete a wider range of projects. Volunteering enables residents to have a direct role in the management of their local greenspace, gaining a greater appreciation and understanding of the site and the council's management objectives. This involvement opens channels for dialogue between the council and local communities, and results in greater levels of trust and co-operation. This can lead to an increased awareness and more responsible behaviour from site visitors who act as the council's eyes and ears.

14.4 Health and well being

The benefits of countryside volunteering extend beyond physical improvements to the council's green spaces. The considerable health benefits of outdoor exercise, both mental and physical, are widely accepted. Volunteers can meet people and socialise whilst learning new skills, discovering new places and making a positive difference to their local environment

The Covid-19 pandemic has highlighted the importance of being outdoors for people's physical and mental health. In relation to biodiversity, the council has an opportunity to develop and enhance programmes that deliver social prescribing using nature-based interventions and activities such as community gardening, green gyms, and food-growing projects. To inform the design of these programmes, consultation with existing volunteers is required to improve the service and ensure biodiversity needs are being met, as well as objectives for the individuals supporting the council.

Policy statement 6

The council will identify training needs and deliver a training programme for the organisation and its contractors to ensure Biodiversity Policy principles are embedded throughout the organisation.

Policy statement 7

The council will assist with the signposting of best practice guidance, in partnership with key stakeholders in managing habitat and biodiversity; and ensure its own operations are undertaken following best practice.

Policy statement 8

The council will work in partnership with primary care givers and community support teams to deliver green social prescribing schemes within its open spaces.

15 Communication

Whilst effective communication on climate change and the biodiversity crisis are essential in acting, evidence suggests engaging on climate change can be challenging (Corner & Shaw, 2018). There is a strong scientific consensus on the detection, attribution and risks on climate change, however, there remains a gap between this narrative and that of policymakers and the public. Impacts may still appear remote and timelines indefinite. It is critical that any communication engages on the local as well as the national and global level to highlight the interconnectivity and immediacy of the crises.

With the impacts of climate change becoming more prevalent in the day to day lives of residents, particularly with severe weather events, it is important for the council to increase engagement on this issue and to highlight the key role of the council and residents in protecting and enhancing biodiversity that is within our area of control.

It is key to ensure the communication strategy is developed to maintain and amplify this engagement. In preparing the communication strategy, the council will embed the following principles for effective communication on climate change and biodiversity crisis:

- Making communication inclusive, accessible and where possible actionable
- Relating information to wider policy areas that matter to the borough's residents, such as health and well-being
- Outlining clear objectives for new initiatives and follow up on the outcome so that residents can see the achievements and progression within their own communities
- Collating and sharing positive stories across the community
- Highlighting areas and initiatives in which residents can become involved

Policy statement 9

The council will develop a communication strategy in relation to biodiversity initiatives and maintenance works, specifically identifying the objective of the initiative, method of delivery and outcomes.

16 Collaborative and Partnership Working

16.1 Successful policy delivery

To ensure the successful delivery of this policy the council must work in a collaborative manner, not only across the services within the council but also with external partners.

16.2 Collaborative working within the Council

To meet its biodiversity obligations, the council must ensure that the distinct services primarily of Planning, Housing and Parks & Countryside but not limited to, are working together to ensure consistency in approach and that work is complementary.

Development Management review planning applications in relation to their impacts on biodiversity, connectivity and in consultation with the Parks & Countryside team specifically in the design and management of green infrastructure and landscaping plans. It is therefore essential this consultation occurs, particularly for major developments where new open spaces will be created and where the council could ultimately be responsible for managing these.

Where our Housing Development team are planning new developments within the borough, a thorough cross service consultation on the design of the developments and their associated greenspaces and provision for gardens and connectivity is required.

16.3 Developing partnerships priorities and initiatives

The council works with several key partners throughout the borough, presented in Appendix 2 & 3, the successful delivery of this policy requires collaboration across the borough to continue. Local initiatives through Town and Parish Councils, community groups, businesses and landowners are being delivered throughout the borough and the council has an opportunity to play a role in supporting and promoting these.

The council will need to have a good understanding of initiatives proposed and being undertaken within the borough. The development of or sharing of a mapping system that allows the council and members of the community to identify local initiatives, together with volunteering opportunities, could be an efficient method of drawing these projects together and providing a good baseline of data. Information could include:

- Project location
- Aims of the initiative
- Project details
- Key outcomes for biodiversity
- Start and end dates
- Whether the project requires external funding or resources

- Identifying volunteering opportunities

This information will allow the council to determine the type of support that can be provided and prioritise based on whether this directly reflects the objectives of the Biodiversity Policy, allowing resource sharing to be identified for the efficient and cost-effective delivery of these initiatives.

16.4 Stakeholder Consultation

Furthermore, to understand community needs, the council will consult annually with relevant stakeholders and residents specifically in relation to:

- The delivery of programmes to enhance biodiversity and community engagement
- Upcoming works and management of greenspaces to benefit biodiversity to ensure clear aims and outcomes are being communicated
- Identifying additional methods that the council can develop and enhance partnerships

The council could create a co-ordinating body where representatives of community groups and relevant town and parish councils can review biodiversity projects, exchange ideas, seek advice and discuss good practice. This would require additional staffing resource to achieve.

The effective delivery of habitat management measures not only requires a monitoring programme, but also excellent data on which to make informed decisions. Data is being collected by several stakeholders and stored at the central repository at Surrey Biological Information Centre (SBIC), the council has an opportunity to extend and enhance the data sharing agreements with its partners.

Policy statement 10

The council will cultivate positive partnerships across the borough and identify and add key projects it can support, sharing resources, where possible and proactively engaging with the local community and local authorities.

Policy statement 11

The council will extend data information sharing agreements with external organisations to increase efficiency and accuracy of data used for management and monitoring.

17 Monitoring

17.1 Management plan monitoring

The importance of monitoring in relation to management plans has previously been referred to in Section 9, Habitat Management and it is key element to the council realising its biodiversity ambitions.

17.2 Biodiversity Net Gain monitoring

Under the legal requirements introduced by the Environment Act 2021, habitat enhanced or created to achieve Biodiversity Net Gain must achieve the distinctiveness and condition forecast and be managed and maintained over the long-term to benefit wildlife. BNG requires habitats be secured for at least 30 years, which means they must be managed and monitored.

Management plans and the monitoring programmes must be long term to achieve this, circa 30 years. Biodiversity reporting will be a statutory requirement, because of the changes to the NERC Act introduced by the Environment Act 2021.

17.3 Protected Site Assessments

Presently on the most highly protected sites the council manages which are Sites of Specific Scientific Interest (SSSI), condition monitoring is assessed and reported on by Natural England's using their habitat assessment methodology.

SSSIs safeguard a representative sample of England's habitats. Monitoring and reporting on the condition of these sites is a vital part of Natural England's statutory responsibility to conserve and protect them.

The objectives of SSSI monitoring are:

- To provide evidence to support site management, and provide feedback to land managers to deliver the best environmental outcomes
- To assess the effectiveness of interventions, and enable us to report on our corporate plan targets and reporting responsibilities
- To improve the future delivery of Natural England's protected sites responsibilities, for example through improved guidance and training
- To contribute to our monitoring and understanding of long-term changes in the natural environment, including delivery of Favourable Conservation Status for habitats and species
- To support landscape scale delivery of outcomes, as important components of resilient, ecologically functional networks, and ecosystem services
- To support Natural England's regulatory and enforcement responsibilities, including as part of the evidence presented in public inquiries and court cases

The SSSI condition assessment categories used to determine the condition of the protected sites the council manages are defined in Appendix 5.

17.4 SNCI reporting

SNCIs form part of the key ecological assets across the borough, of which there are 170 sites and are central to delivering the UK government's Nature Recovery Network (Department for Environment, Food and Rural Affairs, 2020).

The aim of the Nature Recovery Network is to:

- Enhance sites designated for nature conservation using habitat restoration and creation, enhancing corridors and develop steppingstones so that wildlife can move across the landscape
- Improve the landscape's resilience to climate change
- Reinforcing natural and cultural diversity across the landscape
- Benefitting health and well-being

The majority of SNCIs in the borough are in private ownership, with some being managed by the council. SNCIs are protected under the planning system under policy NE1 of the Local Plan Part 1 that protects them from direct and indirect impacts from development. Their lack of statutory protection does not lessen their importance and nor should it lessen the perception of their importance as they play a vital role in conserving the natural heritage and form important linkages between core habitat areas, thus their protection and management is key to delivering a resilience landscape for biodiversity recovery and form part of the Nature Recovery Network.

DEFRA published guidance in 2006 with respect to monitoring SNCIs (DEFRA, 2006) which is further updated by Surrey Nature Partnership (Surrey Nature Partnership, 2019b). Monitoring should aim to identify whether the habitats within the SNCIs are in good or very good condition, and where they are not determining remedial management activities to ensure habitat quality and biodiversity are maximised (Gibbs, 2008). Sites supporting woodland should be monitored every 10 years, whilst those with grasslands and other less stable habitats should be monitored every five years.

To date the council does not have an SNCI monitoring strategy therefore this will be developed as part of this Biodiversity Policy. The monitoring programme could be undertaken over a five-year period with key council owned sites prioritised to reflect the objectives of this biodiversity strategy, specifically ensuring connectivity is enhanced across the landscape. This should also be phased with the Local Plan review cycle (Surrey Nature Partnership, 2019b).

As indicated under Section 11 where an SNCI is likely to be directly or indirectly impacted by a proposed development, the Development Management team will liaise with the green spaces team to ensure impacts have been appropriately considered, and mitigation measures developed.

The key to protecting, managing, and restoring biodiversity across the borough is likely to be the LNRS. This should include all existing sites of conservation value, including SNCI's, as well as adjoining and connecting areas identified as BOAs, and any areas that could contribute to nature restoration in Waverley. It should also consider neighbouring LNRS and connectivity between and through our landscape.

Policy statement 12

The council will develop a costed monitoring regime across all sites or habitats it manages to support and guide their management.

18 Third Parties

18.1 Devolution

Where land is transferred to Town and Parish councils through devolution; the council will ensure the explicit expectations about the implementation of this Biodiversity Policy are communicated to these bodies and seek to negotiate covenants within the transfers to make the following of such compulsory. The council will encourage the adoption of this Biodiversity Policy and future updates for future land maintenance.

18.2 Council land managed by other parties

Where land is leased out to sports clubs, conservation, or other community organisations, see list in Appendix 2; the council will ensure the expectations of this Biodiversity Policy and other related policies are communicated to these bodies and we will seek to influence and encourage these organisations. Where opportunities arise through new lease or licence negotiations the council will ensure the requirements of this policy are fully embedded into any agreements.

18.3 Land owned by other landholders

Where the council carries out work on either land owned by other landowners, either by lease arrangements or agency agreements; the council will ensure that the biodiversity policy principles are implemented as far as is possible.

Where management works are undertaken on behalf of a Highway Authority, the council will continue to offer opportunities to enhance sites for biodiversity and increase connectivity across the landscape. This will ensure:

- Biodiversity is prioritised across all activities undertaken by the council
- Appropriate training and information are provided to all involved, such as councillors, staff, volunteers and contractors

Policy statement 14

The council will ensure that third parties maintaining council-owned land, comply with the Biodiversity Policy. When maintaining land on behalf of a third party, the principles of this policy will be delivered as a far as possible.

Note: It is recognised that existing lease arrangements may be difficult and financially costly to alter, to fully implement this Biodiversity Policy. In these cases, the council would seek to educate and influence third parties wherever possible.

19 Policy Review and Delivery

19.1 Review timeframe

To ensure the policy is being delivered as per the action plan and reflects current trends and understanding, it will be reviewed by the Greenspaces team every five years, or as required to ensure it is up to date and fit for purpose. Councillors responsible for the parks & countryside portfolio will also assist in the review of the document.

19.2 Policy delivery

Officers will report on the delivery of the policy and action (Appendix 6) every five years to the council; officers will however be able to provide informal updates as and when requested.

To be effective and efficient in the delivery of the Biodiversity Policy action plan, the council will need to ensure that the delivery of the policy is monitored and reported on regularly.

19.3 Reporting

At a corporate level this will be achieved by the usual reporting required for the Corporate Strategy delivery and at the service level this will be achieved by the quarterly updates given by the Head of Service reporting to the Overview & Scrutiny Committees.

Throughout the year officers will record against the action plan the status of delivery of each of the action points listed and record and report on any net gains on an annual basis.

Policy statement 13

The council will review this policy every five years, or as required, and will report to council and the community on the delivery of this Biodiversity Policy.

20 Glossary

Term	Definition
Climate change	Change of climate which is attributed directly or indirectly to human activity that alters the composition of the global atmosphere and which is in addition to natural climate variability observed over comparable time periods (obtained from (UNFCCC, 1992))
Biodiversity	The variety of life on Earth and natural patterns it forms (obtained from (United Nations, 2020))
Mitigate	Measures that avoid, reduce, or manage negative effects (Natural England, 2021)
Natural Capital	Natural capital includes certain stocks of the elements of nature that have value to society, such as forests, fisheries, rivers, biodiversity, land and minerals. Natural capital includes both the living and non-living aspects of ecosystems. (Obtained from (HM Treasury, 2020))
Biodiversity net gain	Approach to development and/or land management that aims to leave the natural environment in a measurably better state than it was beforehand (obtained from (CIEEM, CIRIA, IEMA, 2019))
Biodiversity offset	Conservation activities that are designed to give biodiversity benefits to compensate for losses - ensuring that when a development damages nature (and this damage cannot be avoided or mitigated) new nature sites will be created. Where appropriate, biodiversity offsetting is an option available to developers to fulfil their obligations under the planning system's mitigation hierarchy (obtained from (Natural England, 2013)).

21 Acronyms

BOA	Biodiversity Opportunity Area
BNG	Biodiversity Net Gain
CIEEM	Chartered Institute for Ecology and Environmental Management
CIL	Community Infrastructure Levy
CIRIA	Construction Industry Research and Information Association
DEFRA	Department of Environment, Food and Rural Affairs
ELM	Environmental Land Management
IEMA	Institute of Environmental Management and Assessment
IPCC	Intergovernmental Panel on Climate Change
LNR	Local Nature Reserve
LNRS	Local Nature Recovery Strategy
NHS	National Health Service
SAC	Special Area of Conservation
SANG	Suitable Alternative Natural Greenspace
SBIC	Surrey Biological Information Records Centre
SNCI	Site of Nature Conservation Importance
SPA	Special Protection Area
SPD	Supplementary Planning Document
SSSI	Site of Special Scientific Interest

22 References

- Bramley Parish Council. (2017). *Bramley Neighbourhood Plan 2017 - 2032*. <https://www.waverley.gov.uk/Portals/0/Documents/services/planning-and-building/planning-strategies-and-policies/neighbourhood-planning/20211008%20Bramley%20Neighbourhood%20Plan%20Report%20FINAL.pdf?ver=ViD0ygH3-w0mNnv-ucMQ7g%3d%3d>.
- Centre for Biological Diversity. (Accessed in 2021, November). Retrieved from <https://www.biologicaldiversity.org/species/invertebrates/>
- CIEEM, CIRIA, IEMA. (2019). *Biodiversity net gain. Good practice principles for development. A practical guide*. London, UK: CIRIA C776a.
- Corner, A., & Shaw, C. a. (2018). *Principles for effective communication and public engagement on climate change: A handbook for IPCC Authors*. Oxford: Climate Outreach.
- Cranleigh Parish Council. (2021). *Cranleigh Neighbourhood Plan*. Cranleigh Parish Council.
- Davis, J. (2020, September). *UK has 'led the world' in destroying the natural environment*. Retrieved from <https://www.nhm.ac.uk/discover/news/2020/september/uk-has-led-the-world-in-destroying-the-natural-environment.html>
- DEFRA. (2006). *Local Sites: Guidance on their Identification, Selection and Management*. DEFRA.
- DEFRA. (2018). *Biodiversity Net Gain Consultation Impact Assessment*.
- Department for Environment, Food and Rural Affairs. (2020, November). *Policy paper: Nature Recovery Network*. Retrieved from <https://www.gov.uk/government/publications/nature-recovery-network/nature-recovery-network>
- Farnham Town Council. (2021). *Biodiversity Policy Statement*. Retrieved from <https://democracy.farnham.gov.uk/documents/s5976/Annex%201%20Minutes%20July%202021.pdf>
- Gibbs, C. (2008). *Guidance for the Selection of Sites of Nature Conservation Importance (SNCIs) in Surrey*. Surrey Wildlife Trust.
- Godalming and Farncombe Neighbourhood Plan Group. (2019). *Godalming and Farncombe Neighbourhood Plan 2017 - 2032*. <https://www.waverley.gov.uk/Portals/0/Documents/services/planning-and-building/planning-strategies-and-policies/neighbourhood-planning/Final%20Godalming%20and%20Farncombe%20Neighbourhood%20Plan.pdf?ver=O0M1PEW5dqUEaYGu6Ei0IQ%3d%3d>.
- Haslemere Town Council. (2021). *Haslemere Neighbourhood Plan*. <https://www.waverley.gov.uk/Portals/0/Documents/services/planning-and-building/planning-strategies-and-policies/neighbourhood->

planning/Haslemere%20Neighbourhood%20Plan%20Final.pdf?ver=rWc_AN6
QSsFOcqeZfGeVdQ%3d%3d.

- HDA. (2015). *Surrey Landscape Character Assessment: Waverley Borough*.
- HM Treasury. (2020). *Green Book: appraisal and evaluation in central government*.
- Intergovernmental Science-Policy Platform on Biodiversity and Ecosystem Services. (2019). *Summary for policymakers of the global assessment report on biodiversity and ecosystem services*. Bonn: IPBES secretariat.
- Natural Capital Coalition. (2016). *Natural Capital Protocol*. Online Available at: naturalcapitalcoalition.org/protocol.
- Natural Capital Committee. (2019). *Advice to government on net environmental gain*.
- Natural England. (2013). *Biodiversity offsetting*. DEFRA.
- Natural England. (2021). *Biodiversity Metric 3.0 Habitat Condition Assessment Sheets*. Natural England.
- Natural England. (2021, January). *Natural England standing advice*. Retrieved from <https://www.gov.uk/guidance/protected-species-how-to-review-planning-applications#agree-avoidance-mitigation-or-compensation-measures>
- NHS. (2019). *The NHS Long Term Plan*. NHS.
- Panks, S., White, N., Newsom, A., Potter, J., Heydon, M., Meyhew, E., . . . Stone, D. (2021). *Biodiversity Metric 3.0: Auditing and Accounting for Biodiversity - User Guide*. Natural England.
- Ridge, K. (2021). *Good for you, good for us, good for everybody: a plan to reduce overprescribing to make patient care better and safer, support the NHS, and reduce carbon emissions*. Department of Health and Social Care.
- Soule, M. a. (1980). *Forward in Conservation Biology: An Evolutionary Ecological Approach*. Sunderland, Massachusetts: Sinauer Associates.
- State of Nature Partnership. (2019). *The State of Nature*. RSPB.
- Surrey County Council. (2020). *Surrey's New Tree Strategy*. Surrey County Council.
- Surrey Nature Partnership. (2015b). *Naturally Richer: A Natural Capital Investment Strategy for Surrey*. Surrey Nature Partnership.
- Surrey Nature Partnership. (2019). *Biodiversity Opportunity Areas: The basis for realising Surrey's ecological network*. Surrey Nature Partnership.
- Surrey Nature Partnership. (2019a). *Biodiversity Opportunity Areas: The basis for realising Surrey's ecological network*. Surrey Nature Partnership.
- Surrey Nature Partnership. (2019b). *Biodiversity opportunity areas: the basis for realising Surrey's ecological network*. Surrey Nature Partnership.
- Surrey Nature Partnership. (2019b). *Policies and Procedures for the Identification and Selection of Sites of Nature Conservation Importance in Surrey and Surrey Local Sites Partnership Terms of Reference*. Surrey Nature Partnership.
- Surrey Nature Partnership. (2019c). *The State of Surrey's Nature*. Surrey Nature Partnership.

- Surrey Nature Partnership. (2020). *Surrey in the national Nature Recovery Network*. Surrey Nature Partnership.
- Surrey Nature Partnership. (2020a). *Recommendation for adoption of 20% minimum biodiversity net gain across Surrey's planning sector: a Surrey Nature Partnership Position Statement*. Surrey Nature Partnership.
- Surrey Nature Partnership. (2020b). *Surrey in the national Nature Recovery Network*. Surrey Nature Partnership.
- Sweetlove, L. (2011). Number of species on Earth tagged at 8.7 million. *Nature*, <https://doi.org/10.1038/news.2011.498>.
- UNFCCC. (1992). *United Nations Framework Convention on Climate Change*. United Nations.
- United Nations. (2020, September). *United Nations General Assembly 75th Session* . Retrieved from <https://www.unep.org/unep-and-biodiversity>
- Waite, M. (2017). *Surrey State of Nature*. Surrey Nature Partnership.
- Waverley Borough Council . (2020b). *Local PPlan Part 2: Site Allocations and Development Management Policies*.
- Waverley Borough Council. (2018). *Local Plan Part 1: Strategic Policies and Sites*.
- Waverley Borough Council. (2018a). *Waverley Borough Local PPlan Part 1: Strategic Policies and Sites*. Waverley Borough Council.
- Waverley Borough Council. (2018b). *Economic Development Strategy 2018 - 2032*. Waverley Borough Council.
- Waverley Borough Council. (2019). *Climate Change Action Plan*. Waverley Borough Council.
- Waverley Borough Council. (2020). *Online consultation on the Climate Emergency Action Plan Between August and October 2020*.
- Waverley Borough Council. (2020). *Pesticide Policy and Action Plan*. Waverley Borough Council.
- Waverley Borough Council. (2022). *Tree and Woodland Policy and Action Plan*. Waverley Borough Council.
- Wilson, E. (1988). *Biodiversity*. Washington DC: National Academy Press.
- Wilson, E. (1992). *A Diversity of Life*. Belknap Press.
- Witley Neighbourhood Plan Group. (2020). *Witley Neighbourhood Plan 2017 - 2032*. <https://www.waverley.gov.uk/Portals/0/Documents/services/planning-and-building/planning-strategies-and-policies/neighbourhood-planning/Witley%20Neighbourhood%20Plan.pdf?ver=CcPUWFghsv7iIRZoCuJNCg%3d%3d>.

Appendix 1: Legislative Context

Conservation of Habitats and Species Regulations 2017 (as amended)

Provides for the protection of Natural 2000 sites (SACs, SPAs and Ramsar sites), European Protected Species and habitats. European Protected Species are protected from:

- Deliberate capture, injury or killing
- Deliberate disturbance of a European Protected Species, such that it impairs their ability to breed, reproduce or rear their young, hibernate or migrate or significantly affect their local distribution or abundance
- Deliberately take or destroy effect
- Damage or destroy a breeding site or resting place
- Keep, transport, sell or exchange any live, dead, or part of a European Protected Species

European Protected Species include, but are not limited to:

- Great crested newt
- Natterjack toad
- Otter
- Smooth snake
- Sand lizard
- All bat species
- Hazel dormouse

Wildlife and Countryside Act 1981 (as amended)

Key piece of legislation consolidating existing wildlife legislation to incorporate the requirements of the Bern Convention and Birds Directive. It includes additional protection measures for species listed under the Conservation of Habitats and Species Regulations 2017 (as amended) and includes a list of species protected under the Act. It also provides for the designation and protection of Sites of Special Scientific Interest (SSSI).

Development which would adversely affect a SSSI is not acceptable except only in special cases, where the importance of a development outweighs the impact on the SSSI when planning conditions or obligations would be used to mitigate the impact. Developments likely to impact on a SSSI will require an Environmental Impact Assessment (EIA).

The Impact Risk Zones (IRZs) dataset is a GIS tool which details zones around each SSSI according to the sensitivities of the features for which it is notified and specifies the types of development that have the potential to have adverse impacts. Natural England uses the IRZs to make an initial assessment of the risk of impacts on SSSIs and to quickly determine which consultations are unlikely to pose risks and which require more detailed consideration. Local Planning Authorities (LPAs) have a duty to consult Natural England before granting planning permission on any development that is in or likely to affect a SSSI.

Further information on specific legislation relating to species protected under the Wildlife and Countryside Act 1981 (as amended) is detailed below, under Protection of Protected Species and Habitats.

The Environment Act 2021

The new Environment Act introduces changes to the Town and Country Planning Act 1990 (TCP Act) and the Natural Environment and Rural Communities Act 2006 (NERC Act) with relevance to biodiversity.

The Act provides a tool to implement changes in England across environmental sectors including air quality, biodiversity, water, and waste reduction and resource efficiency. The Act includes a target to halt the decline of nature by 2030, and mandates Biodiversity Net Gain for developments, elements in the Act include:

- Strengthened biodiversity duty
- Biodiversity net gain to ensure developments deliver at least 10% increase in biodiversity
- Local Nature Recovery Strategies to support a Nature Recovery Network

The new requirement for Local Nature Recovery Strategies (LNRS) are intended to integrate with the National Recovery Network, and with the new Environmental Land Management (ELM) schemes brought in by the Agriculture Act 2020. It is not yet clear if the LNRS will be at County or District level, but it will be necessary to at minimum assist in preparing, agree to the contents, review and consult on the LNRS.

The LNRS will include a statement of biodiversity priorities for the strategy area made up of:

- a description of the strategy area and its biodiversity
- a description of the opportunities for recovering or enhancing biodiversity, in terms of habitats and species, in the strategy area

- the priorities, in terms of habitats and species, for recovering or enhancing biodiversity (taking into account the contribution that recovering or enhancing biodiversity can also make to other environmental benefits), and
- proposals as to potential measures relating to those priorities
 - Duty upon Local Authorities to consult on street tree felling
 - Strengthen woodland protection enforcement measures
 - Conservation Covenants
 - Protected Site Strategies and Species Conservation Strategies to support the design and delivery of strategic approaches to deliver better outcomes for nature
 - Prohibit larger UK businesses from using commodities associated with wide-scale deforestation
 - Requires regulated businesses to establish a system of due diligence for each regulated commodity used in their supply chain, requires regulated businesses to report on their due diligence, introduces a due diligence enforcement system

Council's obligations under the Act for reporting.

The new Environment Act introduces changes to the Town and Country Planning Act 1990 (TCP Act) and the Natural Environment and Rural Communities Act 2006 (NERC Act) with relevance to Biodiversity.

Under the amended NERC Act local authorities have a duty to conserve and enhance biodiversity and are required to publish biodiversity reports, among other changes. This report, which must be published within 3 years of the statute coming into effect should contain:

- a summary of the action which the authority has taken over the period covered by the report for the purpose of complying with its duties under section 40(1) and (1A)
- a summary of the authority's plans for complying with those duties over the period of five years following the period covered by the report
- specified quantitative data relating to biodiversity in any area of land in England in relation to which the authority exercises any functions
- a summary of the action taken by the authority in carrying out its functions under Schedule 7A to the Town and Country Planning Act 1990 (biodiversity gain as condition of planning permission) over the period covered by the report
- information about any biodiversity gains resulting or expected to result from biodiversity gain plans approved by the authority during that period

- a summary of the authority's plans for carrying out those functions over the five year period following the period covered by the report

This places a new and non-negotiable critical biodiversity reporting responsibility onto the council and this is an obligation the council must meet.

This will create the need for a new and comprehensive system of data collection and processing in order to comply with the reporting requirements and ensure the council is able to report of time and forms a key part of this biodiversity policy.

Countryside and Right of Way Act 2000

Amends and strengthens the Wildlife and Countryside Act 1981 (as amended). It also details habitats and species for which conservation measures should be promoted.

Natural Environment and Rural Communities Act 2006

Section 40 of the Act places a duty on local authorities to conserve and enhance biodiversity in England whilst carrying out their normal functions. Section 41 comprises a list of Habitats of Principal Importance (HPs) and Species of Principal Importance (SPs) which should be considered. Local authorities are required to publish biodiversity reports. These reports must be published within 3 years of the statute coming into effect and should contain: A summary of the action which the authority has taken over the period covered by the report for the purpose of complying with its duties under section 40 (1) and (1A). A summary of the authority's plans for complying with those duties over the period of five years following the period covered by the report. specified quantitative data relating to biodiversity in any area of land in England in relation to which the authority exercises any functions. a summary of the action taken by the authority in carrying out its functions under Schedule 7A to the Town and Country Planning Act 1990 (biodiversity gain as condition of planning permission) over the period covered by the report. The changes to the TCP Act mandate biodiversity net gain as a requirement for planning permission, and the submission to and approval by the local planning authority of a biodiversity plan.

Hedgerows Regulations 1997

Under these regulations it is an offence to intentionally or recklessly remove, or cause or permits another person to remove, a hedgerow. Important hedgerows are defined in Section 4 of the Regulations. This includes hedgerows that have existed for over 30 years or satisfies at least one criterion listed in Part II of Schedule 1.

Wild Mammals (Protection) Act 1996

Under this act wild mammals are protected from intentional cruelty and unnecessary suffering from offences including that of beating, crushing, drowning or asphyxiating.

The Commons Act 2006

Details the provisions made about common land and town or village greens.

Health and Safety at Work Act 1974

Details the general duties that employers have towards employees and members of the public, and those that employees have to themselves and each other. A few regulations also apply including waste management, noise, hazardous waste, Environmental Protection Act 1990.

Reservoirs Act 1975

Details provisions against escapes of water from large reservoirs or lakes artificially created or enlarged. In line with this, councils have the responsibility of taking water level readings, ensuring sluices and outfalls are maintained and cleared. Regular inspections are undertaken by council engineers and the Inspector of Dams.

Bathing Water Regulations 2013, as amended

Details information on the expected water quality at bathing waters. The information is displayed on water safety signs at Frensham Common and on the Waverley Borough Council website.

Protection of Badgers Act 1992

This act prohibits the deliberate killing, injuring or capturing of a wild badger; and any interfering with badger setts (and the attempt to do so). General exemptions are provided, and licenses may be issued for the taking and killing of badgers (for example, as obtained for recent badger culls).

Appendix 2: Background information on sites managed by Waverley Borough Council

Sites	Locality	Area	Designation	Mgt plan status	Funding	Key habitat	Current monitoring	Current Leases & Partnerships
Alfold Common	Alfold	Cranleigh	CL 185 Common Land	Mgt Statement Exp 2021		Roadside Verge and Mature Trees		Alfold Parish Council
Clappers Meadow	Alfold	Cranleigh	Public Open Space			Grass		
Birtley Green	Bramley	Cranleigh	CL 149 Common Land	Mgt Exp 2025, Woodland Mgt Plan 2026		Rough grassland, small pond		
Bramley Cemetery	Bramley	Cranleigh	Closed Cemetery			Grass, Scrub and Trees		Diocese of Guildford
Chestnut Way Recreation Ground	Bramley	Cranleigh	Public Open Space			Grass, Scrub and Trees		
Run Common	Bramley	Cranleigh				Woodland		
Rushett Common & Rooks Hill	Bramley	Cranleigh	Common Land	Mgt Statement Exp 2025, Woodland Mgt Plan 2026		Oak woodland with ash and birch		Part leased to Blackheath Cricket Club
Alfold Road	Cranleigh	Cranleigh	CL14 Common Land			Roadside Verge		
Barhatch Road	Cranleigh	Cranleigh	Common land CL219	Mgt Statement Exp 2025		Deciduous woodland mainly oak with ash		
Bedlow Lane	Cranleigh	Cranleigh	CL 219, Common Land	Mgt Statement Exp 2025		Mature Trees and Stream		
Cranleigh Common	Cranleigh	Cranleigh	Common land	Mgt Plan Exp 2028		Pond communities, hay meadows, open grassland, woodland fringe, mature trees	NVC survey 2020	Cranleigh Parish Council, Part Leased Cranleigh Cricket Club & Cranleigh Lions, Summerlands Estate Residents Association SERA Community Volunteers, Cranleigh in Bloom

Sites	Locality	Area	Designation	Mgt plan status	Funding	Key habitat	Current monitoring	Current Leases & Partnerships
Cranleigh Mead	Cranleigh	Cranleigh	Public Open Space			Open grassland and mature trees		
Elmbridge Road	Cranleigh	Cranleigh	Common Land, CL14 & CL 221 tiny section of Section 9 land	Mgt Statement Expired		River, Grass Verges,		
Gaston Gate	Cranleigh	Cranleigh	Common Land	Mgt Statement Exp 2025		Open grass verges and roadside deciduous woodland		
Guildford Road	Cranleigh	Cranleigh	Common Land	Mgt Statement Exp 2025				
Lashmere Recreation Ground	Cranleigh	Cranleigh	CL14			Open Grassland		
Lucks Green	Cranleigh	Cranleigh	Common land	Mgt Plan Exp 2028		Pond communities, hay meadows, open grassland, woodland fringe, mature trees	NVC survey 2020	Cranleigh Parish Council, Cranleigh Cricket Club, Summerlands Estate Residents Association SERA Community Volunteers, Cranleigh in Bloom
Queensway Allotment	Cranleigh	Cranleigh	Former Allotments			Grass and Trees		
Queensway Open Space	Cranleigh	Cranleigh	Public Open Space			Grass, Hedge and Trees		
Smithwood Common Road	Cranleigh	Cranleigh	Common land					
Summerlands Estate	Cranleigh	Cranleigh	Part Ancient Semi Natural Woodland	Mgt Plan Exp 2027		Part ancient semi-natural woodland and grassland with trees and pond.	NVC survey 2020	Active Summerlands Estate Residents Association (SERA)
Vine Cottages	Cranleigh	Cranleigh				Grass, Hedge and Trees		
Dunsfold Common	Dunsfold	Cranleigh	CL 162 Common Land			Open Meadow, Ponds, Trees and Woodland		Leased to Dunsfold Parish Council, Dunsfold Cricket Club
Bulls Head Green	Ewhurst	Cranleigh	CL 134 Common Land			Grass and Trees		

Sites	Locality	Area	Designation	Mgt plan status	Funding	Key habitat	Current monitoring	Current Leases & Partnerships
Ellens Green	Ewhurst	Cranleigh	CL 135 Common Land	Mgt Statement Exp 2025		Mown grass, deciduous woodland block & individual roadside trees		
Ewhurst Green	Ewhurst	Cranleigh	CL 133 Common Land					
Ardath	Wonersh	Cranleigh	CL 82,83, 177 Common Land	Mgt Statement Exp 2025		Roadside Verge and mature Trees		
Bisney Cottage	Wonersh	Cranleigh	CL 83 Common Land	Mgt Statement Exp 2025		Roadside Common land strip and woodland		
Blackheath Common	Wonersh	Cranleigh	SSSI, AONB, Green Belt	Mgt Plan Exp 2024	Higher Level Stewardship	Heathland	Natural England site assessments, NVC Survey 2016	National Trust, Natural England, ARC
Blackheath Grove	Wonersh	Cranleigh	Public Open Space	Mgt Statement Exp 2022		Woodland		
Lords Hill Common	Wonersh	Cranleigh	Common land CL172, AONB, AGLV	Mgt Statement Exp 2025, Woodland Mgt Plan 2026		Hay meadows		Leased to Wonersh Parish Council
Norley Common	Wonersh	Cranleigh	Common land CL9 SNCI 3324, AONB, AGLV	Mgt Statement Exp 2025, Woodland Mgt Plan 2026		Broadleaved woodland		
Philips Hatch	Wonersh	Cranleigh		Woodland Mgt Plan Exp 2026		Woodland		
Shamley Green	Wonersh	Cranleigh	Common Land	Mgt Statement Exp 2024		Open grassland		Leased to Wonersh parish Council and Shamley Green Cricket Club
Stroud Common	Wonersh	Cranleigh	Common land CL178	Mgt Statement Exp 2025, Woodland Mgt Plan Exp 2026				
Wonersh Common	Wonersh	Cranleigh	Common land CL182 SNCI 3318, Surrey Hills AONB AGLV.	Mgt Statement Exp 2025, Woodland Mgt plan 2026		Secondary woodland		Part Leased to Wonersh Parish Council

Sites	Locality	Area	Designation	Mgt plan status	Funding	Key habitat	Current monitoring	Current Leases & Partnerships
Badshot Lea Green	Badshot Lea	Farnham	Village Green			Grass and Trees		
Badshot Lea Orchard	Badshot Lea	Farnham	Public Open Space			Grass, Scrub and trees		
Badshot Lea Pond	Badshot Lea	Farnham	Common land	Mgt Plan Exp 2031		Pond, wetland communities and open grassland		Local community volunteers and Residents Association.
Badshot Lea Recreation Ground	Badshot Lea	Farnham	Public Open Space			Grass and Trees		Badshot Lea Recreation Ground Committee, Badshot Tennis, Football and Cricket Clubs
Boundstone Recreation Ground	Boundstone	Farnham	Public Open Space			Grass, Trees and Hedges		
Laurel Grove	Boundstone	Farnham		Mgt Statement		Mixed secondary woodland		
Ten Acre Wood	Boundstone	Farnham	Common Land	Mgt Statement Exp 2023		Secondary woodland, Acid Grassland		Residents are active volunteers
Bourne Recreation Ground	Bourne	Farnham	Village green			Grass and Mature Trees		Bourne Sports Club, Bourne Conservation Group
Burnt Hill east	Bourne	Farnham	Common land	Mgt Statement Exp 2024		Mixed secondary woodland and scrub		Bourne Conservation Group undertake works
Burnt Hill west	Bourne	Farnham	Common land	Mgt Statement Exp 2024		Secondary woodland		Bourne Conservation Group undertake works
Sturt Walk	Bourne	Farnham		Mgt Statement Exp 2025		Woodland, river, grassland		Bourne Conservation Group undertake works.
Compton Copse	Compton	Farnham	Village Green No 17, AGLV	Mgt Statement Exp 2025		Secondary woodland		Residents are active volunteers
Abbotts Cottages	Dockenfield	Farnham	The small square in the far southeast of the site is included in the Ancient Woodland inventory for the southeast.	Mgt Statement Exp 2025		Grass, Hedges, Trees and Secondary Woodland, ASNW		
Bealeswood Common	Dockenfield	Farnham	Common land, SNCI, AGLV	Mgt Plan Exp 2029		Secondary woodland, Unimproved grassland.	Regular recording of plants, butterflies, birds, crickets and	Community volunteers, Butterfly Conservation, Dockenfield Parish Council

Sites	Locality	Area	Designation	Mgt plan status	Funding	Key habitat	Current monitoring	Current Leases & Partnerships
							grasshoppers by residents. NVC survey 2021	
Baldreys	Farnham	Farnham	Public open Space			Grass, scrub and trees		
Borelli Walk	Farnham	Farnham	Public open Space			Grass, riverbank, trees		
Farnham Park	Farnham	Farnham	Park, SANG, AGLV		Higher Level Stewardship, SANG	Grass, meadow, ponds, trees, woodlands, stream		Friends of Farnham Park, Part leased to Grazier, Farnham Cricket Club and Farnham Golf Course
Langhams Recreation Ground	Farnham	Farnham	Public Open Space			Grass, scrub, mature trees		Bourne Conservation Group
Mardens Recreation Ground	Farnham	Farnham	Public Open Space			Grass, scrub, hedge and trees		
Morley Road Recreation Ground	Farnham	Farnham	Public Open Space			Grass, scrub, hedge and trees		
Paradise Wood	Farnham	Farnham		Mgt Statement Exp 2025		Mixed secondary woodland		Bourne Conservation Group
Shepherd & Flock	Farnham	Farnham	Village Green					Leased to Shepherd & Flock Pub
Snayles Lynch	Farnham	Farnham	SNCI	Mgt Statement Exp 2025		Floodplain meadow		
St Andrews Churchyard	Farnham	Farnham	Closed Cemetery			Grass and trees		Diocese of Guildford
Thurbans Play Area	Farnham	Farnham				Grass and scrub		
Frensham Common (including Stony Jump)	Frensham	Farnham	SPA, SAC, SSSI, LNR (Churt Common), AONB, Country Park	Mgt Plan Exp 2030, Woodland Mgt Plan 2030	Higher Level Stewardship	Lowland dry heathland, lowland wet heathland, bog, mire	SSSI assessment, Fixed point photography since 2006 (with specific reference to erosion at Kings Ridge), Volunteer research, NVC 2016, Annual Butterfly survey, ongoing breeding bird survey, Ranger surveys	Volunteers, Amphibian and Reptile Conservation (ARC), National Trust, Natural England, Surrey Botanical Society, Surrey Heathland Project, Surrey Bird Club, SARG

Sites	Locality	Area	Designation	Mgt plan status	Funding	Key habitat	Current monitoring	Current Leases & Partnerships
Peakfield	Frensham	Farnham	Public Open Space			Grass, scrub and trees		
Hale Recreation Ground	Hale	Farnham	Village Green			Grass and mature trees		Hale Recreation Ground Committee, Greenways Nursery School
Hale Reeds	Hale	Farnham	Acquired as Public Open Space & for Housing	Mgt Statement Exp 2024		Grass and ancient semi natural mixed woodland		
Oast House Crescent Recreation Ground	Hale	Farnham	Public Open Space			Grass and scrub		
Old Park Close	Hale	Farnham	Village Green			Grass		
Park View Estate	Hale	Farnham	Public Open Space			Grass and trees		Park View Residents Association
Sandy Hill BMX site	Hale	Farnham						
Sandy Hill open space	Hale	Farnham				Acid grassland, secondary woodland	Recent monitoring of reptiles carried out by SARG	SARG
Sandy Hill Topfield	Hale	Farnham				Grass, scrub and trees		Leased in from SCC
Heath End Recreation Ground	Heath End	Farnham	Public Open Space			Grass and woodland		Part leased to Farnham Town Youth FC
Moons Hill Recreation Ground	Rowledge	Farnham	Village Green	Mgt Statement Exp 2025		Secondary woodland		
Rowledge Recreation Ground	Rowledge	Farnham	Public Open Space			Grass, hedge and mature trees		Part Lease to Rowledge Bowls, Cricket & Tennis Clubs
Runfold Recreation Ground	Runfold	Farnham	Public Open Space			Grass, scrub and mature trees		
Shepherds Way	Tilford	Farnham				Grassland		Leased to private tenant
Tilford Nature Reserve	Tilford	Farnham	LNR, AONB, AGLV, Green Belt			Secondary woodland, Alder Carr		
Land adj. Six Bells Roundabout	Weybourne	Farnham						Leased to private tenant

Sites	Locality	Area	Designation	Mgt plan status	Funding	Key habitat	Current monitoring	Current Leases & Partnerships
Monkton Lane Football Ground	Weybourne	Farnham				Grass, hedge, scrub and mature trees		Leased to Farnham Untied
Weybourne nature Reserve	Weybourne	Farnham	LNR, Green Belt	Mgt Plan Exp 2028	Higher Level Stewardship	Fen / Wet Grassland and Unimproved Grassland	NVC survey 2009, Hydrological survey 2009, NVC Survey 2021	Natural England, Environment Agency, Community volunteers
Weybourne Recreation Ground	Weybourne	Farnham	Public Open Space			Grass, stream and mature Trees		Badshot Lea Football Club
Beldhams Play Area	Wrecclesham	Farnham	Public Open Space			Grass		
Westfield Lane	Wrecclesham	Farnham	Public Open Space			Grass		Leased to Badshot Lea Football Club
Wrecclesham Recreation Ground	Wrecclesham	Farnham	Public Open Space			Grass and trees		Wrecclesham Recreation Ground Committee, Wrecclesham Cricket, Football & Tennis Clubs
Binscombe Open Space	Binscombe	Godalming	Public Open Space	Mgt Statement Exp 2022, Woodland Mgt Plan Exp 2031		Open grassland with mature woodland fringe		
Copse Side	Binscombe	Godalming						
Elstead Green	Elstead	Godalming	Village Green No 106, CL 235 Common Land			Grass and mature tree		Leased to Elstead Parish Council
Elstead Moat	Elstead	Godalming	CL 32 Common Land			Pond and trees		Leased to Natural England
Thursley Road Cemetery	Elstead	Godalming	Closed Cemetery			Grass, hedges and trees		Diocese of Guildford
Westbrook Green	Elstead	Godalming				Grass and trees		
Broadwater Park	Farncombe	Godalming	King George V Playing Field	Mgt Plan Exp 2025, Woodland Mgt Plan Exp 2031		Grass, sport facilities, parkland, lake and mature trees and woodland		Broadwater Park Advisory Group, Friends of Broadwater Park, Broadwater Park Volunteers, leased to Broadwater Golf Course, GAS, Guildford Rugby Club, Godalming Tennis Club, Farncombe CC & Wanderers CC, Godalming Town FC

Sites	Locality	Area	Designation	Mgt plan status	Funding	Key habitat	Current monitoring	Current Leases & Partnerships
Canon Bowrings	Farncombe	Godalming				Grass, scrub and trees		
Combe Road Recreation Ground	Farncombe	Godalming				Grass		
Long Gore Woodland	Farncombe	Godalming	Housing Land	Woodland Mgt Plan Exp 2031		Woodland		Northbourne Action Group
Longbourne Green	Farncombe	Godalming	Public Open Space			Grass and trees		
St Johns The Evangelist Churchyard	Farncombe	Godalming	Closed Cemetery			Grass, scrub and trees		Diocese of Guildford
The Glade Open Space	Farncombe	Godalming				Grass, scrub and trees		
The Oval	Farncombe	Godalming				Grass and trees		
Aarons Hill open and woodland	Godalming	Godalming	Public Open Space	Woodland Mgt Plan Exp 2030		Grass, mature trees and woodland		
Bargate Wood	Godalming	Godalming	Public Open Space	Mgt Statement Exp 2022, Woodland Mgt Plan Exp 2030		Mature woodland		
Burys Field	Godalming	Godalming	Public Open Space			Grass and mature trees		
Crownpits Recreation Ground	Godalming	Godalming	Public Open Space			Grass and mature trees		
Frith Hill	Godalming	Godalming	Public Open Space			Woodland		
Holloway Hill Recreation Ground	Godalming	Godalming	QE11 Playing Field, Public Open Space	Woodland Mgt Plan Exp 2030		Grass, sports pitches, mature trees and woodland		Holloway Hill Sports Association, Busbridge Tennis Association, Godalming Cricket Club
Home Farm	Godalming	Godalming	Public Open Space	Mgt Statement Exp 2022		Mature lime trees		
Lammas Lands	Godalming	Godalming	Common	Mgt Plan Exp 2026				Natural England, EA, part leased to Grazier
Ockford Ridge	Godalming	Godalming				Grass and trees		

Sites	Locality	Area	Designation	Mgt plan status	Funding	Key habitat	Current monitoring	Current Leases & Partnerships
Phillips Memorial Park	Godalming	Godalming	Public open Space		Heritage Lottery Fund (previous)	Parkland, grassland, river frontage, veteran trees		Part leased to Godalming & Farncombe Bowls Club, Local Community volunteers
St Peter & St Pauls Churchyard	Godalming	Godalming	Closed Cemetery			Grass, shrub and trees		Diocese of Guildford
Hascombe Recreation Ground	Hascombe	Godalming				Grass and trees		
Amberley Copse	Milford	Godalming	Public Open Space	Woodland Mgt Plan Exp 2030		Mature woodland		
Amberley Road Play Area	Milford	Godalming	Public Open Space			Grass		Leased to Witley Parish Council
Shackleford Common	Shackleford	Godalming	Common land, AONB, AGLV, Green Belt	Mgt Plan Exp 2030, Woodland Mgt Plan Exp 2030		Acid grassland, Secondary woodland	NVC survey 2021	Some volunteer group activities
Mare Hill Common	Witley	Godalming	SSSI, SPA and SAC, SNCI, AONB, AGLV, Green Belt, Biodiversity opportunity Area	Mgt Plan Exp 2027, Woodland Mgt Plan Exp 2028	Countryside Stewardship	Lowland dry Heathland, lowland wet heathland, bog, mire, Valley mire, Secondary woodland	Volunteer research, NVC Survey 2016, Annual Butterfly survey, On-going Breeding Bird survey, Recording of aculeates and fungi by local experts	Natural England, SARG, Butterfly Conservation Trust, Amphibian and Reptile Conservation (ARC)
Beaconhill Recreation Ground	Beaconhill	Haslemere						
Eight acres	Beaconhill	Haslemere	Public Open Space	Mgt Statement Exp 2024, Woodland Mgt Plan Exp 2029		Woodland		
Marchants Hill	Beaconhill	Haslemere	Public Open Space & Recreation Ground Surrey Hills AONB.	Mgt Statement Exp 2024, Woodland Mgt Plan Exp 2029		Woodland and grass		The grass area is managed by Haslemere Town Council
Chiddingfold Green	Chiddingfold	Haslemere	CL 167 Common Land			Grass and trees		Leased to Chiddingfold Parish Council

Sites	Locality	Area	Designation	Mgt plan status	Funding	Key habitat	Current monitoring	Current Leases & Partnerships
Chiddingfold Recreation Ground	Chiddingfold	Haslemere				Grass and trees		Leased to Chiddingfold Parish Council
Grayswood Church	Grayswood	Haslemere	CL 341 Common Land, Green belt, Designated AONB & AGLV	Woodland Mgt Plan Exp 2029		Woodland		
Grayswood Common and St Georges Wood	Grayswood	Haslemere	Common land, SNCI west of A286, AONB (excl. St Georges), Green belt (excl. St Georges)	Mgt Statement Exp 2024, Woodland Management Plan 2029		Mature secondary woodland (Grayswood), Ancient semi-natural woodland (St Georges)		
Grayswood Recreation Ground	Grayswood	Haslemere				Grass and trees		Part Leased in from National Trust, part leased out to Grayswood CC
Clammer Hill	Grayswood	Haslemere	Common Land, AONB, AGLV, Green Belt	Mgt Statement Exp 2025, Woodland Mgt Plan Exp 2029		Wooded roadside Common land		
Aitken House adj Woodland	Haslemere	Haslemere				Woodland		
Derby Road Cemetery	Haslemere	Haslemere	Closed Cemetery			Grass, trees, H and hedges		Diocese of Guildford
Haslemere War Memorial Recreation Ground	Haslemere	Haslemere	QE11 Playing Field, Public Open Space			Grass, Sports pitches, mature trees and hedges		Part leased to Haslemere Sports Association, Haslemere Lawn Tennis Club & Haslemere Bowls Club
Haste Hill Common	Haslemere	Haslemere	Common land, AONB, AGLV, Green Belt	Mgt Statement Exp 2026, Woodland Mgt Plan Exp 2029		Secondary woodland, pond		Residents are active volunteers
High Lane Recreation Ground	Haslemere	Haslemere	Public Open Space			Grass, shrubs, hedge and trees		
Holdfast Lane	Haslemere	Haslemere	AONB, AGLV, Green Belt	Mgt statement Exp 2025		Wooded roadside		
Shepherds Hill Common	Haslemere	Haslemere	Common Land	Woodland Mgt Plan Exp 2029		Secondary woodland		

Sites	Locality	Area	Designation	Mgt plan status	Funding	Key habitat	Current monitoring	Current Leases & Partnerships
St Bartholomew's Churchyard	Haslemere	Haslemere	Closed Cemetery			Grass and trees		Diocese of Guildford
St Bartholomew's Green	Haslemere	Haslemere	CL 338 Common Land, Conservation Area			Trees and grassland		
St Stephens Churchyard	Haslemere	Haslemere	Closed Cemetery			Grass and trees		Diocese of Guildford
Sunvale / Shottermill Cemetery	Haslemere	Haslemere	Open Cemetery			Grass and trees		
Weycombe Road Cemetery	Haslemere	Haslemere	Closed Cemetery			Grass, hedge and trees		Diocese of Guildford
Weydown Common	Haslemere	Haslemere	Common land CL333, Surrey Hills AONB.	Mgt Statement Exp 2025, Woodland Mgt Plan 2029		Deciduous woodland		
Woolmer Hill North	Haslemere	Haslemere	AONB, AGLV	Woodland Mgt Plan Exp 2029		Secondary woodland		
Woolmer Hill South	Haslemere	Haslemere	AONB, AGLV	Woodland Mgt Plan Exp 2029		Part ancient semi-natural woodland, Secondary woodland incl. mature sweet chestnut coppice		
Woolmer Hill Recreation Ground	Haslemere	Haslemere	QE11 Playing Field, Public open Space			Grass, sports facilities, mature trees		Part leased to WHSA

Appendix 3: Waverley Borough Council Partnerships

Partner	Role
Bourne Conservation Group	<p>This group was set up by a resident of the Bourne in 2002 as part of a scheme run by the environmental charity Earthwatch, with the aim of improving the condition of Waverley Borough Council owned Paradise Wood, through which the founder regularly walked. The first project undertaken by the newly formed group was to clear invasive cherry laurel and rhododendron from Paradise Wood, and they formed a strong relationship with Waverley Borough Council which has continued to the present day. The group has grown and expanded, and they now work on several sites in the Bourne, both on behalf of Waverley Borough Council and other landowners. With the agreement of Waverley Borough Council, they carry out one or two workdays a year on Waverley Borough Council owned woodlands in the Bourne and carry out <i>ad hoc</i> works on Langhams Recreation Ground. As well as carrying out practical work, they take an active role in surveying the wildlife in their patch and have carried out several moth surveys in Waverley Borough Council owned Ten Acre Wood.</p> <p>Waverley Borough Council's partnership with the Bourne Conservation Group enables more practical habitat management and wildlife surveying to be carried out on their sites in this area than would otherwise be possible, and therefore helps the council to manage these sites to a higher standard for biodiversity. The partnership also provides Waverley Borough Council with a vital link to the local community, increasing local awareness in the Bourne of its sites in and their management, and providing a channel for residents to highlight issues and concerns.</p>
Surrey Amphibian Reptile Group (SARG)	<p>SARG assists Waverley Borough Council with amphibian and reptile surveys on several of its sites. This partnership enables these species groups to be surveyed more thoroughly than would otherwise be possible, and for Waverley Borough Council to have access to a comprehensive and up to date data set on herptile species on several its key sites.</p>
Amphibian Reptile Conservation (ARC)	<p>ARC has worked in partnership with Waverley Borough Council to re-introduce the threatened sand lizard to Mare Hill Common, with the aim of establishing a viable breeding population. Suitable heathland habitat was identified, and 50 juvenile sand lizards were released each year from 2011 to 2013 inclusive. Subsequent surveys in 2014 identified several juveniles, which were indicative of a successfully breeding population. ARC also assist Waverley Borough Council in maintaining the heathland in and around the release site in an optimal condition for this species through bringing their large team of experienced volunteers to Mare Hill for a day each winter to undertake scrub clearance.</p> <p>Waverley Borough Council's partnership with ARC has directly facilitated an increased diversity of reptile species on Mare Hill Common, and their ongoing assistance enables the council to ensure that the introduced sand lizard population continues to thrive. ARC have also added council rangers to their protected species licence issued by Natural England for the surveying of sand lizard, smooth snake, and natterjack toad, which saves Waverley Borough Council undertaking the administration of obtaining this licence independently. WBC have management agreements with ARC for areas on both Blackheath Common and Frensham Great Pond and Common.</p>
National Trust	<p>National Trust is not only a partner in the local area but is also owns Frensham Great Pond and Common which Waverley Borough Council manages.</p> <p>Together, National Trust and Waverley Borough Council develop management plans for these sites and identifies significant works, changes, infrastructure, and development which need to be approved by National Trust before Waverley Borough Council can deliver the work. A close partnership is essential to ensure threats and opportunities are responded to such that the sites are managed to protect and enhance the biodiversity.</p>
Natural England	<p>Natural England is responsible for ensuring SSSIs remain in favourable condition. Waverley Borough Council works closely with Natural England across the SSSIs it manages to ensure Management Plans are approved and delivered in line with their guidelines and expertise. Any works that could impact a SSSI require consent from Natural England and in preparing the management plans, works are agreed and consented. A new grant scheme, Environmental Land Management (ELM) scheme will be put in place in 2023, through which excellent partnerships will be maintained and enhanced.</p>
Surrey Wildlife Trust	<p>Surrey Wildlife Trust's mission is to restore nature across the county. This is achieved through the management of reserves, but also forging strong partnerships across the county. Waverley Borough Council has engaged Surrey Wildlife Trust to develop this biodiversity policy and liaises with the Ecology Planning Advice Service to ensure planning applications appropriately consider impacts to ecology before determining applications.</p>

Appendix 4: Outline provisional budget forecasts

Key	In budget (has been the case historically)	Budget required	?	Funding/Budget not known yet
-----	--	-----------------	---	------------------------------

Provisional budgeting includes medium to high value items from action plan, low value items can be met from existing revenue budgets.

Budget (£000)	Policy No.	2022/23	2023/24	2024/25	2025/26	2026/27	2027/28	2028/29	2029/30	2030/31	2031/32	2032/33
Revenue												
New Biodiversity Officer post	5			49.5	52	54.5	57	57	57	57	57	57
Training	6			5	5	5	5	5	5	5	5	5
GIS work	11			5	5	5	5	5				
Monitoring (Site surveys)	12			10	10	10	10	10	10	10	10	10
Monitoring (SNClS)	12			5	5	5	5	5	5	5	5	5
Total			52	74.5	77	79.5	82	82	77	77	77	77
Capital												
WBC Key protected sites (in HLS schemes)	1	54	54	54	54	54	54	Match funding	Match funding	Match funding	Match funding	Match funding
HLS/CS and future ELMS for Key protected sites	1	76	76	76	76	76	76	?	?	?	?	?
Baseline site surveys	1		20	10	10	10	10	10	10	10	10	10
Mgt plan writing	2			15	15	15	15	15	15	15	15	15
Review mgt plans	2		10	10	10	10	10	10	10	10	10	10
BNG pot. site assessments	4			20	20	20	20					
WBC (New specific site mgt)	1			20	20	20	20	20	20	20	20	20
WBC (Vehicles/machinery)	3				20		20		20		20	
Total		130	150	205	225	205	225	?	?	?	?	?

Appendix 5: SSSI Condition categories

<http://publications.naturalengland.org.uk/file/5264957468049408>

SSSI Condition Categories

These definitions were produced as part of revised guidance on the assignment of unfavourable recovering condition. They provide greater detail on condition categories than definitions published on Natural England's website for external audiences.

Favourable Condition	The designated feature is being adequately conserved and the results from monitoring demonstrate that the feature is meeting all the mandatory site-specific monitoring targets set out in the Favourable Condition Tables (FCT). The FCT sets the minimum standard for favourable condition for the designated feature and there may be scope for the further (voluntary) enhancement of the feature.
Unfavourable recovering condition	Often known simply as 'recovering'. The Feature is not yet fully conserved, but all the necessary management measures are in place. Provided that the recovery work is sustained, the feature will reach favourable condition in time. At least one of the designated features mandatory attributes is not meeting their targets (as set out in the site specific FCT).
Unfavourable no-change condition	The feature is not being conserved, and will not reach favourable condition, unless there are changes to the management or external pressures and this is reflected in the results of monitoring over time; with at least one of the mandatory attributes not meeting its target (as set out in the site specific FCT) with the results not moving towards the desired state. The longer the feature remains in this poor condition, the more difficult it will be, in general, to achieve recovery.
Unfavourable declining condition	The feature is not being conserved and will not reach favourable condition unless there are changes to management or external pressures. The feature condition is becoming progressively worse, and this is reflected in the results of monitoring over time, with at least one of the designated features mandatory attributes not meeting its target (as set out in the site specific FCT) with the results moving further away from the desired state. The longer the feature remains in this poor condition, the more difficult it will be, in general, to achieve recovery.
Part destroyed condition	Lasting damage has occurred to part of a designated feature, such that it has been irretrievably lost and will never recover (no amount of management will allow the feature to ever reach favourable condition).
Destroyed condition	Lasting damage has occurred to an entire designated feature such that the feature has been irretrievably lost (no amount of management will bring this feature back). This feature will never recover e.g., a finite mineralogical feature has been totally removed from its surroundings without consent and is therefore lost forever.

Appendix 6: Proposed action plan and timescales

Policy type	Policy No.	Aspiration	Action	Proposal	Time years from policy launch	Delivery option	Annual Cost impact ¹	Advantages	Disadvantages
Habitat management	1	Habitats the council manages should be in good or very good condition and we will prioritise management and habitat creation to maximise biodiversity and connectivity across the landscape	*Continue to maintain key priority sites to maintain favourable condition	*Ensure current work programmes are delivered and embedded for successive years	Ongoing yearly cost for length of agreement	Greenspaces team and where appropriate other Services	High Upto £180K	A continuation of the exemplary management of these areas, fulfilling the councils aims and objectives. Meets legal obligations	Requires continued external grants and council financial resources invested
			Collate existing habitat condition information to determine current condition	Undertake an audit of the information that the council holds on habitat conditions. This will involve reviewing the existing management plans and noting information gaps with regards to habitat condition	1	Greenspaces team and where appropriate other Services	Low	The council will have a comprehensive list of habitat conditions and will be able to focus resources on areas most requiring improvement and connectivity	None
			Survey the habitats for which baseline condition is not available	Develop a survey programme across habitats and sites in line with best practice guidance. Can be done in consultation with external consultants and to ensure cost-effective delivery would involve volunteer effort, internal staff and some support from consultancy	10	Greenspaces team, volunteers, and external consultants	Medium £10K	Comprehensive understanding of the biodiversity present at each site and within habitats. Implement adaptive management that responds to key changes identified on sites. Demonstrates improvements in biodiversity and habitat condition	Additional resources are required to deliver this
			Identify priorities for improvement of habitat condition to improve connectivity across the borough	Use the survey information to prioritise habitat management across the borough	10	Greenspace, Housing, Development mgt and if appropriate other Services	Medium £20K	More efficient use of resources. Delivery of coherent biodiversity strategy across the borough	Additional resources are required to deliver this

Low = £0 - £4,999, Medium = £5000 - £49,000, High = > £50,000 £180,000 – Cost impacts are per annum, for full duration of cost impacts the timescale should be factored in. * - Work area already being delivered.

Policy type	Policy No.	Aspiration	Action	Proposal	Time years from policy launch	Delivery option	Annual Cost impact ¹	Advantages	Disadvantages
			Coordinate opportunities for habitat creation to enhance habitat connectivity across the borough	Use the survey information to direct habitat creation across the borough	10	Greenspaces team, Planning / development management, Housing Development team and liaison with SCC	Low ²	Ensures any habitat creation meets local biodiversity objectives. Maximises connectivity across the landscape	Additional resources are required to deliver this
			Identify existing funding mechanisms and review areas where funding has been deficient so that these can be prioritised as part of future funding cycles	Audit of current funding mechanisms across all sites and habitats, and identification of how these can be prioritised in areas where funding has been deficient	10	Greenspaces team, Housing development and where appropriate other Services	Low	More efficient use of resources	None
	2	The council will ensure there is a current habitat management plan or statement for all sites or habitat types it manages and that these fully consider habitat connectivity	Identify which sites or habitats require a management plan or strategy, preparing these and keeping them up to date	Undertake an audit of the sites and habitats the council manages to determine mgt plan status and prepare new mgt plans for sites not covered	10	Greenspaces team and external consultants	Medium £15K	The council sets out its plans for the next 10 years or more to show how it will manage and improve biodiversity	Additional financial, staffing, specialist external consultant resources are required
			Ensure management plans and strategies are linked with the objectives of the Biodiversity Opportunity Area (BOA) within which some sites are located in	In reviewing each management plan, the BOA objectives will be checked, and the objectives of the management plan will be developed to ensure these consider the BOA objectives.	10	Greenspaces team and external consultants	Medium £10K	Ensures a coherent strategy across the borough and will guide works irrespective of staff changes within the council. A living record and demonstrates achievement. Public consultation and engagement	Additional financial, staffing, specialist external consultant resources are required

Low = £0 - £4,999, Medium = £5000 - £49,000, High = > £50,000 £180,000 – Cost impacts are per annum, for full duration of cost impacts the timescale should be factored in. * - Work area already being delivered.

Policy type	Policy No.	Aspiration	Action	Proposal	Time years from policy launch	Delivery option	Annual Cost impact ¹	Advantages	Disadvantages
Biodiversity Funding	3	The council will ensure the efficient use of existing resources, identify future opportunities for natural capital delivery by S106, Community Infrastructure Levy (CIL), or other external funding to maintain and improve greenspace infrastructure	Determine opportunities for alternative funding resources, specifically relating to natural capital and ensuring these do not conflict with the biodiversity objectives of the sites being considered	Review existing funding opportunities and identify whether new opportunities exist	5	Greenspaces team and where appropriate other Services	Low	Diversification of funding sources. Reducing the cost of managing land	None
			Review methods of delivering maintenance work to ensure these make best use of resources by efficient work planning and the recycling of by-product material wherever possible	Review the current tools and modes of transport for all activities to determine whether alternatives that produce less carbon emissions are available	10	Investing in modern technology	Low ³	Lower carbon emissions, in line with the council's commitment to being carbon neutral by 2030	Switch would require the installation of electric charging points at site offices, electric vehicles are more costly, and resources are required
				Where tool & machinery replacements are required, select alternatives that reduce impacts on the environment	10	Investing in modern technology	Medium £20K every 2 yrs	Lower carbon emissions, in line with the council's commitment to being carbon neutral	Additional resources are required to deliver this
	4	Where the council identifies suitable opportunities to accept biodiversity net gain offset funding on its own land, or where it is directly delivering projects, we will aim to deliver 20% biodiversity net gain for those developments wherever possible.	Liaise with Development Management team to identify projects where biodiversity offsetting could be delivered within Waverley Borough Council open spaces	The council to assess its current assets to determine the potential gain that can be met on site. This would involve doing baseline surveys and model improvements that can deliver a biodiversity net gain	5	Greenspaces team, External consultants, Planning/dev development management	Medium £20K	Medium costs in the short term, this money would be recuperated through developer contribution. In developing the funding strategy, initial costs would be incorporated such that no additional costs to the council would be required	Initial funding is required; however, costs would only be recovered where a developer signs an agreement with the council to offset within its land ownership
				Liaise with the Development Management team to identify projects that can be offset on council land	10	Greenspace, Development Control teams	Low	Increased liaison between the two teams	None

Low = £0 - £4,999, Medium = £5000 - £49,000, High = > £50,000 £180,000 – Cost impacts are per annum, for full duration of cost impacts the timescale should be factored in. * - Work area already being delivered.

Policy type	Policy No.	Aspiration	Action	Proposal	Time years from policy launch	Delivery option	Annual Cost impact ¹	Advantages	Disadvantages
				Undertake biodiversity net gain assessments of the offset opportunities	10	External consultants	Low	This element only required where projects are identified for biodiversity offsetting. Should none be identified, this activity would not take place	None
Planning	5	The council will ensure Development Management consults the Greenspaces team for planning applications that create new green spaces, have a landscaping strategy, impact common land and/or impacts a SSSI, NR, SNCI, have implications for the LNRS and/or are seeking BNG offsite opportunities	Liaise as necessary with the Development Management team to identify future projects that would require consultation, such as major projects	Meetings with Development Management to identify projects that require review from Greenspaces team	Ongoing	Greenspaces team and Development Management team	Low ⁴	Improved communication across the council teams	None
			Review and comment on landscape strategies and the design of open spaces to ensure these reflect the Biodiversity Policy, BOA policies (where relevant) and other local biodiversity objectives	Identify the most appropriate team member to comment on applications and review these	Ongoing	Biodiversity Officer role, Greenspaces team and Development Management team	Medium to High £47K-£57K	Impacts to greenspaces and species are mitigated. Opportunities to manage new green spaces, such as SANGs, are identified. Provide new income streams to reduce costs to the council	New Staff post required
Education	6	The council will identify training needs and deliver a training programme for the organisation and its contractors to ensure Biodiversity Policy principles are embedded throughout the organisation.	Identify training requirements across the workforce and contractors	Audit of current knowledge and develop a training programme across the workforce and contractors	1 - 2	Biodiversity Officer role and/or external consultants	Low	Embed biodiversity improvements across all of the council's activities and decision making. Upskills existing staff	New Staff post required
			Deliver the required training	Delivery of a training programme that considers how different services should consider biodiversity in their activities	Ongoing as required	Biodiversity Officer role and/or external consultants	Medium £5K		

Low = £0 - £4,999, Medium = £5000 - £49,000, High = > £50,000 £180,000 – Cost impacts are per annum, for full duration of cost impacts the timescale should be factored in. * - Work area already being delivered.

Policy type	Policy No.	Aspiration	Action	Proposal	Time years from policy launch	Delivery option	Annual Cost impact ¹	Advantages	Disadvantages
	7	The council will assist with the signposting of best practice guidance, in partnership with key stakeholders in managing habitat and biodiversity; and ensure its own operations are undertaken following best practice	Review existing land management practices and determining whether the measures require updating	Audit of current management measures and determine whether these need to be updated to reflect best-practice guidance	1	Biodiversity Officer & Greenspaces team	Low ⁵	Ensures all management is delivered in line with the latest best-practice guidance. Leading by example	None
			Signpost Town & Parish Councils and local community groups to information on best practice and guidance for managing to improve biodiversity	Provides links to information, key stakeholders groups	5	Biodiversity Officer role, Key partners and stakeholders	Low	Strengthen cooperation and relationship with stakeholders	Additional funding requirements
			Engage with contractors to ensure management undertaken by third parties is undertaken in line with best practice	Provide clear methods and aims of activities to contractors	Ongoing	Greenspaces team & Housing Development	Low	Ensures contractors are accountable for their activities and these are delivered in line with the council's Biodiversity Policy	None
	8	The council will work in partnership with primary care givers, community support teams and volunteers to deliver green social prescription measures within its green spaces	Liaise with primary care givers and community support teams to develop green social prescription services to the local community	Meetings with primary care team to identify volunteer opportunities that can deliver social prescription	1	Greenspaces team and Communities team	Low	Wellbeing benefits to the local community. Enhances volunteer opportunities	Management of volunteers is time-consuming and may require more officer resource. Borough wide volunteer work plan would need to be created
			Consult with its existing volunteers on an annual basis to identify improvements	Annual questionnaire to volunteers to maximise engagement and enhance the experience.	Ongoing	Greenspaces team	Low	Enhance volunteer experience and engagement. Improve volunteer skillset to increase work delivery, commitment and ownership	
			Review and consider identified changes to improve the service	Review the results of the annual questionnaire	Ongoing	Greenspaces team and Communities team	Low to Medium ⁶	Increased engagement	If improvements require financial input, this will result in additional resources being required

Low = £0 - £4,999, Medium = £5000 - £49,000, High = > £50,000 £180,000 – Cost impacts are per annum, for full duration of cost impacts the timescale should be factored in. * - Work area already being delivered.

Policy type	Policy No.	Aspiration	Action	Proposal	Time years from policy launch	Delivery option	Annual Cost impact ¹	Advantages	Disadvantages
Communication	9	The council will develop a communication strategy in relation to biodiversity initiatives and maintenance works, specifically identifying the objective of the initiative, method of delivery and outcomes	Developing a communication strategy that details the methods of communication, timescales, information to include and reasons for the initiative or maintenance work in addition to the delivered outcomes	Liaise with the communication team to develop the strategy.	Ongoing	Biodiversity Officer role, Greenspace, Housing Development, Planning Policy/ Development Management and Comms. team	Low	Maximises public engagement and understanding with regards to the actions require to manage greenspaces. Ensures communication with respect to activities is consistent	Additional resources are required to deliver this
Partnerships	10	The council will continue to foster positive partnerships across the borough and identify and add key projects it can support, sharing resources, where possible and proactively engaging with the local community and local authorities	Identify existing initiatives across the borough and determining whether resources can be shared to deliver these	Undertake meetings with key stakeholders to review initiatives and progress and identify areas where resources can be shared to deliver these effectively	Ongoing	Biodiversity Officer role, Key partners and stakeholders	Low	Efficient delivery of projects. Strengthening of partnerships	None
			Undertake consultations with the local community with regards to the management of open spaces				Low	Maximises community engagement and understanding of biodiversity issues	None
	11	The council will extend data information sharing agreements with external organisations to increase efficiency and accuracy of data used for management and monitoring	Review existing data sharing agreements and updating these where relevant	Audit of current data sharing and determine whether these require updating	1	Biodiversity Officer role, Key partners and stakeholders	Low	May reduce the need for additional surveys where recent information is gathered	None
			Develop a mapping system that allows members of the community to identify local biodiversity initiatives	Identify the most appropriate mapping tool to collect information on biodiversity assets	5	Biodiversity Officer role, Surrey Biological Information Centre, SCC and SWT	Low to Medium £5K ⁷	Increases partnership working and community engagement and identifies key local priorities	Additional resources are required to deliver this
Monitoring	12	The council will develop a costed monitoring regime across all sites or habitats it manages to support and guide their management	Ensure all management plans and strategies include a costed monitoring regime using the Monitoring, Evaluation, Reporting and Improvement (MERI) tools	As part of the review and preparation of the management plans, ensure these included a robust and costed monitoring strategy	10	Biodiversity Officer Role & Greenspaces team	Low	Management plans are regularly updated ensuring that the monitoring strategy is included	None

Low = £0 - £4,999, Medium = £5000 - £49,000, High = > £50,000 £180,000 – Cost impacts are per annum, for full duration of cost impacts the timescale should be factored in. * - Work area already being delivered.

Policy type	Policy No.	Aspiration	Action	Proposal	Time years from policy launch	Delivery option	Annual Cost impact ¹	Advantages	Disadvantages
			Identify existing monitoring strategies and determine whether these require additional information, such as species-specific or habitat condition surveys	The updating of monitoring strategies will need to determine whether updated surveys are required to inform the management of a site	10	Biodiversity Officer Role & Greenspaces team	Medium £10K	Species and habitat surveys can help determine the success of a monitoring strategy and inform future management objectives to maximise biodiversity	Where additional surveys are required, this will require additional resources
			Develop and implement a SNCIs monitoring strategy across the borough and link this to the local plan phasing	Identify all the SNCIs across the borough, the date last surveyed and commission the surveys in line with best practice guidance	10	Biodiversity Officer Role, Greenspace, Planning Policy/Development mgt, External consultants, SCC	Medium £10K	Improves Development Management review of planning applications in relation to SNCIs and understanding of biodiversity assets. Determines the management required to maximise biodiversity. Strengthen liaison with landowners	Considering these sites have not been surveyed for many years, the initial surveys will be extensive and will require investment
	13	The council will review this policy as required and will report to council and the community on the delivery of this Policy and Action Plan	Review of Biodiversity Policy as required	Following review, the present updates and progress to council and the community on the delivery of this Policy	5	Biodiversity Officer Role & Greenspaces team	Low ⁸	The Biodiversity Policy will reflect latest information and provide current advice and trends	Additional specialist staff / consultants will be required to deliver this reporting
Third Parties	14	The council will ensure third parties maintaining council land, comply with the Biodiversity Policy. When maintaining on behalf of a third party, the principles of this policy will be delivered as far as possible	Negotiate with third parties maintaining council-owned land to comply with the policy. When maintaining land on behalf of a third party, implement the principles of this policy as far as possible	Communicate the Biodiversity Policy to third parties	Ongoing	Biodiversity Officer Role, Greenspace, Legal (possible external legal services) and Estates teams	Low – Medium £3K - £12K	Ensures the consistent delivery of the Biodiversity Policy across the borough	Potential additional legal costs

Low = £0 - £4,999, Medium = £5000 - £49,000, High = > £50,000 £180,000 – Cost impacts are per annum, for full duration of cost impacts the timescale should be factored in. * - Work area already being delivered.